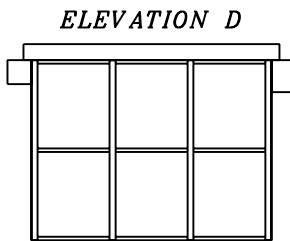
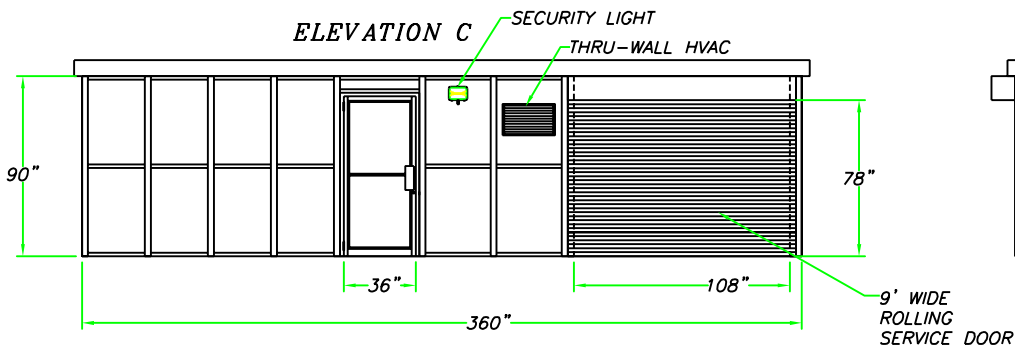
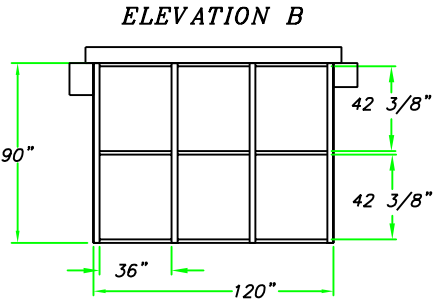
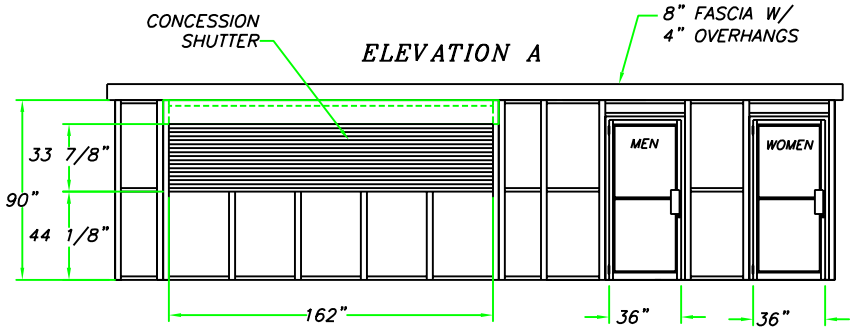


Notice - All Star Bleachers claims proprietary rights in the information disclosed on this drawing. It is issued in confidence for engineering information only and may not be used, in whole or in part, to manufacture anything whether or not shown hereon, reproduced or disclosed to anyone without direct written permission from All Star Bleachers



ELEVATION VIEWS

REVISION STATUS OF SHEETS		
-	-	REV
2	1	SH

CERTIFICATION

CUSTOMER NAME

CUSTOMER ADDRESS

CITY, STATE ZIP



AUSTIN MOHAWK & CO., INC.
 2175 BEECHGROVE PLACE
 UTICA, NY 13501
 PHONE: 315.793.3000
 TOLL FREE: 1.800.765.3110
 FAX: 315.793.9370
 WEBSITE: www.austinmohawk.com
 E-mail: info@austinmohawk.com

TITLE: 10'-0" X 30'-0" CONCESSION STAND

JOB NO:

LOCATION:

MOD NO: CS827-RR

COLOR:

DATE:

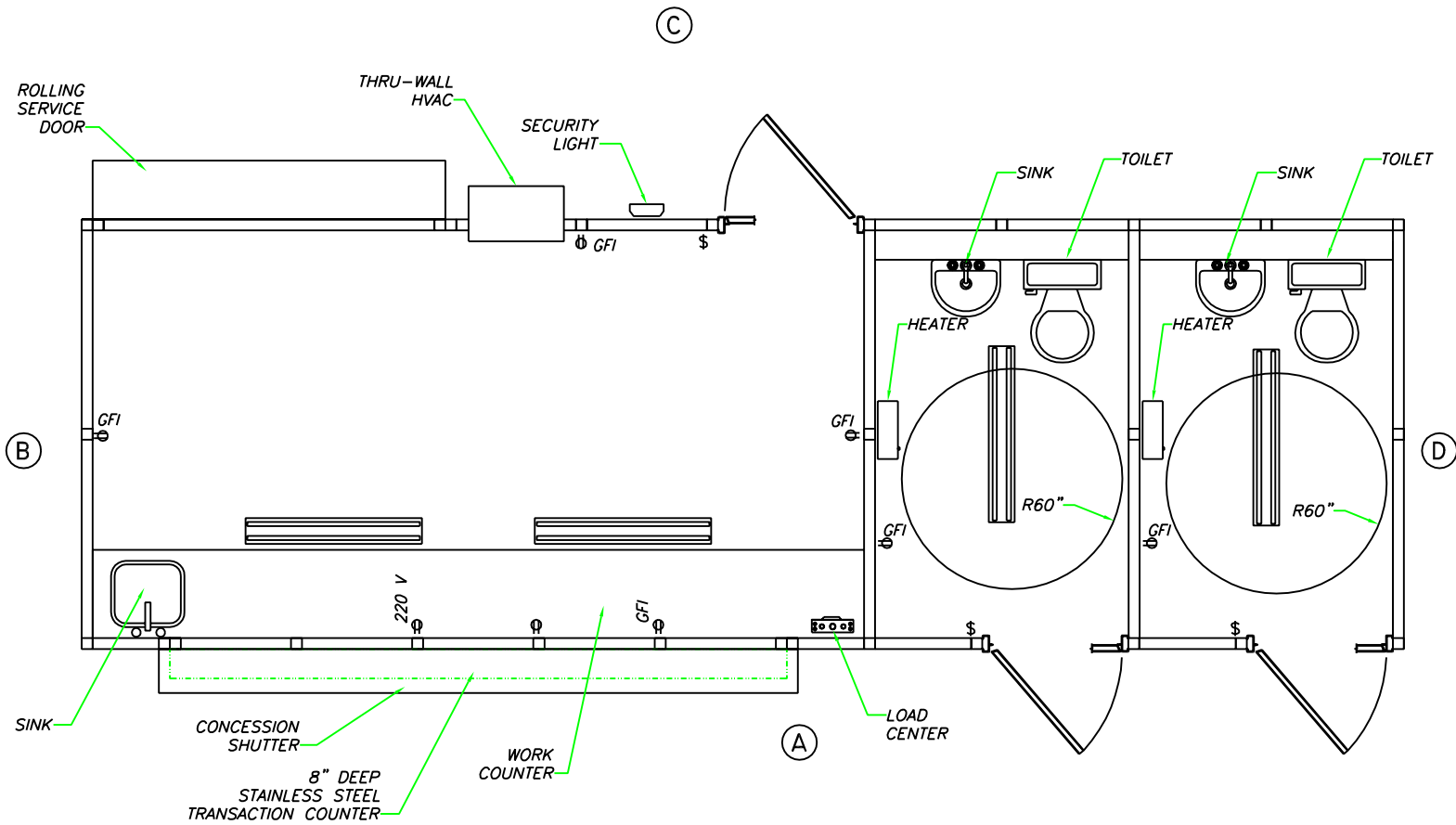
DRAWN BY:

APPROVED BY:

SCALE: 1/4" = 1'

SHEET: 1 of 2

Notice - All Star Bleachers claims proprietary rights in the information disclosed on this drawing. It is issued in confidence for engineering information only and may not be used, in whole or in part, to manufacture anything whether or not shown hereon, reproduced or disclosed to anyone without direct written permission from All Star Bleachers



PLAN VIEW
SCALE: 1/2" = 1'

CUSTOMER NAME

CUSTOMER ADDRESS
CITY, STATE ZIP



AUSTIN MOHAWK & CO.,
INC.

2175 BEECHGROVE PLACE
UTICA, NY 13501
PHONE: 315.793.3000
TOLL FREE: 1.800.765.3110
FAX: 315.793.9370

WEBSITE: www.austinmohawk.com
E-mail: info@austinmohawk.com

TITLE: 10'-0" X 30'-0"
CONCESSION STAND

JOB NO:

LOCATION:

MOD NO: CS827-RR

COLOR:

DATE:

DRAWN BY:

APPROVED BY:

SCALE: 1/4" = 1'

SHEET: 2 of 2

CERTIFICATION