

GENERAL BUILDING SPECIFICATIONS:

Notice - All Star Bleachers claims proprietary rights in the information disclosed on this drawing. It is issued in confidence for engineering information only and may not be used, in whole or in part, to manufacture anything whether or not shown hereon, reproduced or disclosed to anyone without direct written permission from All Star Bleachers

- A. GENERAL: Pre-assemble building fabricated from low maintenance, lightweight corrosive resistant aluminum (factory fabricated).
- 1 DIMENSIONS: 8' wide x 16' long and 94" (2387.6 mm) nominal outside height. Interior dimension from floor to ceiling shall be 84" (2133.6 mm) nominal height.
- 2 FRAME CONSTRUCTION: Provide structural framing of 6063-T6 aluminum alloy extrusions. Members shall have a CLEAR ANODIZED finish. Connections shall be fastened internally to framing systems using mechanical fasteners or MIG welded where necessary.
- 3 BASE / FLOOR: Base structure shall be layered assembly, 2" (50.8 mm) thick, consisting of a .032 mill finish aluminum underside, plywood and a finished floor of nonskid aluminum diamond tread plate. Base is mounted to steel base frame (where necessary). Floor to be insulated to R-20.4 with ISO Poly insulation board.
- 4 LOWER WALL PANEL: Exterior shall be .032 CLEAR ANODIZED aluminum, (2) layers of 7/16" OSB, 2" (50.8 mm) rigid insulation (R-14.4) and .032 interior aluminum. Overall thickness of panel shall be 3" (76.2 mm), with an overall R-value of 15.4.
- 5 CEILING: Interior ceiling shall be foam core panel system providing smooth flat interior, constructed from 24 ga prefinished white steel with ISO Poly insulation board. (R-20.4) and 7/16" OSB.
- 6 ROOF: Construct using steel 20 ga, G-90 interlocking pan sections. Sections shall be 3" (76.2 mm) high with varying widths able to support minimum of 40 psf (1915 Pa) live load. Provide roof drains into full-perimeter gutter system.
- 7 WINDOWS: No fixed windows. Sliding windows shall have aluminum frame and 1/4" (6.35 mm) Solar Low "E" glass (U-value of .68), insect screen and locking device. Glass shall be glazed within wall system extrusions and not fastened to exterior wall. Glass sealed with concealed gasket system.
- 8 DOOR: Sliding door shall be extruded aluminum frame, top hung type using heavy duty ball bearing nylon tire with steel hub. A solid brass cylinder lock provided.
- 9 ELECTRICAL: Electrical shall be wired according to N.E.C. Standards. Load center shall be a General Electric 125 Amp 120/240 volt unit with 8 or 16 open circuits. Wiring shall be #12 within surface mounted EMT conduit lines, and included shall be (4) GFCI duplex receptacles with tester.
- 10 LIGHTING: Lighting shall be twin fluorescent lights.
- 11 HEAT: (2) Heating shall be wall mounted electric with fan forced operation, 3000/4000 Watt, 10,000 BTU, 208/230 Volts and integral thermostat in an enamel coated 20 ga steel cabinet.

CUSTOMER NAME

CUSTOMER ADDRESS

CITY, STATE ZIP



AUSTIN MOHAWK & CO.,
INC.

2175 BEECHGROVE PLACE
UTICA, NY 13501
PHONE: 315.793.3000
TOLL FREE: 1.800.765.3110
FAX: 315.793.9370

WEBSITE: www.austinmohawk.com
E-mail: info@austinmohawk.com

TITLE: 8'-0" X 16'-0"
VARSITY PRESSBOX

JOB NO:

LOCATION:

MOD NO: VPB816

COLOR:

DATE:

DRAWN BY:

APPROVED BY:

SCALE: 1/4" = 1'

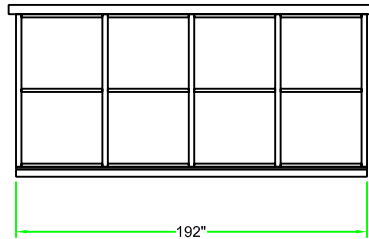
SHEET: 1 of 2

REVISION STATUS OF SHEETS		
REV	DATE	DESCRIPTION
2	1	SH

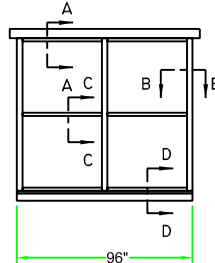
CERTIFICATION

Notice - All Star Bleachers claims proprietary rights in the information disclosed on this drawing. It is issued in confidence for engineering information only and may not be used, in whole or in part, to manufacture anything whether or not shown hereon, reproduced or disclosed to anyone without direct written permission from All Star Bleachers

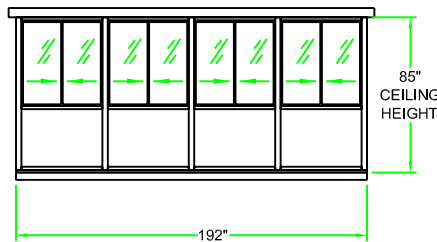
ELEVATION A



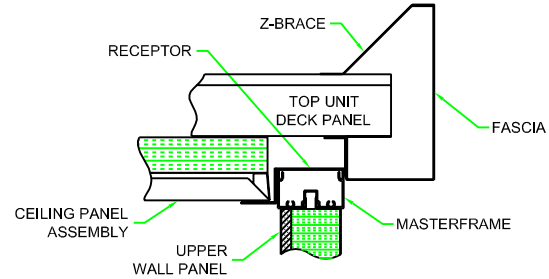
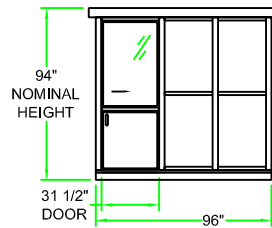
ELEVATION B



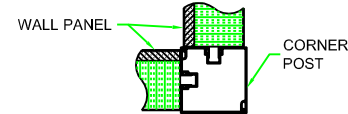
ELEVATION C



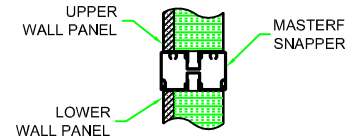
ELEVATION D



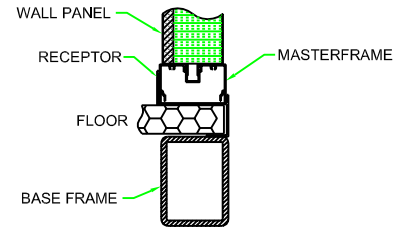
SECTION A-A



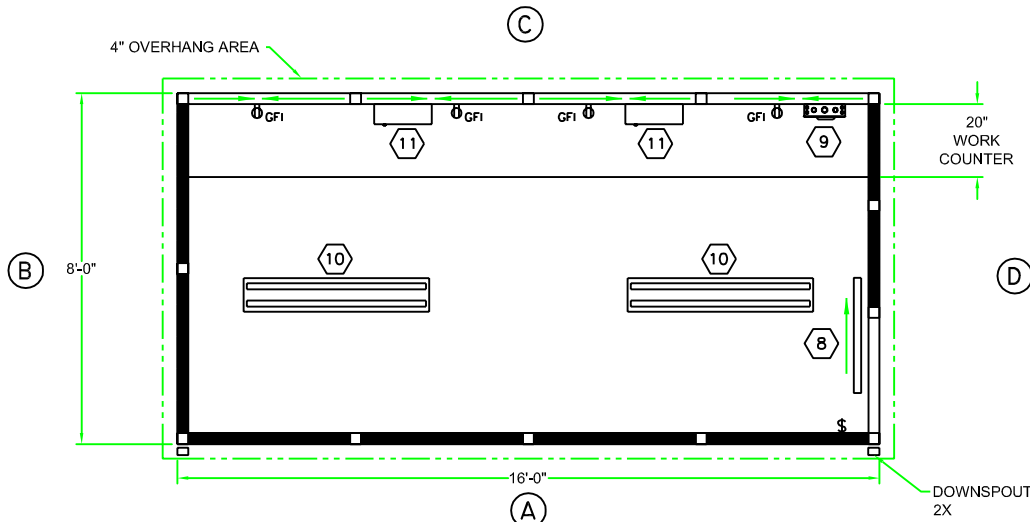
SECTION B-B



SECTION C-C



SECTION D-D



PLAN VIEW
SCALE = 2:1

CUSTOMER NAME

CUSTOMER ADDRESS

CITY, STATE ZIP



AUSTIN MOHAWK & CO., INC.

2175 BEECHGROVE PLACE
UTICA, NY 13501
PHONE: 315.793.3000
TOLL FREE: 1.800.765.3110
FAX: 315.793.9370

WEBSITE: www.austinmohawk.com
E-mail: info@austinmohawk.com

TITLE: 8'-0" X 16'-0"
VARSITY PRESSBOX

JOB NO:

LOCATION:

MOD NO: VPB816

COLOR:

DATE:

DRAWN BY:

APPROVED BY:

SCALE: 1/4" = 1'

SHEET: 1 of 1

CERTIFICATION