

TYPICAL AUSTIN STEEL BUILDING SPECIFICATIONS

Notice - All Star Bleachers claims proprietary rights in the information disclosed on this drawing. It is issued in confidence for engineering information only and may not be used, in whole or in part, to manufacture anything whether or not shown hereon, reproduced or disclosed to anyone without direct written permission from All Star Bleachers

- A. GENERAL: Pre-assemble building of steel construction.
- ① DIMENSIONS: 11'6" (3505.20 mm) wide x 51' 3" (15621 mm) long and 10' 1" (3073.40 mm) in height.
- ② FRAME: Framing shall 3" x 3" x .120" (76.2 x 76.2 x 3.048 mm) structural tube, ASTM A500 grade B. Seams shall be MIG welded. Exposed seams shall be ground flat and smooth.
- ③ BASE/FLOOR: Building to typically be constructed on a 4" galvanized structural tube frame. Floor assembly to be 2" (50.8 mm) thick comprised of galvanized steel under-side, laminated plywood and 3/16" (4.76 mm) Aluminum tread plate finished floor.
- ④ WALL PANELS: Wall panels shall be 14 ga exterior, 3" (76.2 mm) of E.P.S. insulation, and a 16 ga inside face. Panels shall be galvanized and shall be MIG welded into place. Interior Partition walls separating coaches boxes from center press area shall be: 3 5/8" (20ga) metal studs with 7/8" thick metal furring strips on coaches box side of wall and 5/8" fire rated Gypsum board on each side, return Gypsum board behind window jamb. Provide 3" sound Attenuation Batt insulation full height of wall. All Gypsum board shall be supplied and installed on site by others.
- ⑤ CEILING: Interior ceiling shall be foam core panel system providing smooth flat interior. Constructed from 24 ga prefinished white steel with expanded polystyrene core.
- ⑥ ROOF: Construct using steel 20 ga, G-90 interlocking pan sections. Sections shall be factory coated with industrial quality polyester white paint. Sections shall be 3" (76.2mm) high with varying widths able to support minimum of 50 psf (2394 Pa) live load and covered with a seamless EPDM finish. Roof drains into gutter system on elevations A,B & D only.
- ⑦ FINISH: Exterior surfaces shall be smooth and flat with no visible blemishes. Surfaces shall be painted using an epoxy/urethane prime to paint system designed to withstand salt spray and freeze thaw testing.
- ⑧ WINDOWS: Fixed windows shall be 1" (25.4 mm) Insulated GRAY TINTED tempered safety glass. Sliding windows shall be 1" (25.4 mm) Insulated GRAY TINTED tempered safety glass. Window frames shall be anodized aluminum and fastened to building with no exposed fasteners. Moving windows shall be supplied with locking device.
- ⑨ DOORS: Swing doors shall be Steel Commercial grade insulated with 3 hinges and hardware. Exterior doors hardware shall included: hinges, mortise cylinder, exit device, overhead stop, kickplate, threshold, sound seals, & A.D. bottom. - NO CLOSER on exterior doors. Interior doors hardware shall included: hinges, passage set (no lock), closer, overhead stop, threshold, sound seals & A.D. bottom.
- ⑩ ELECTRICAL: Electrical shall be wired according to N.E.C. Standards. Load center shall be a General Electric; model TM3210CCU; 100 Amp Main 3 Wire; Single Phase; 120/240 volt unit with 32 open circuits. Wiring shall be within the wall system. Wiring is 12ga stranded inside concealed EMT conduit lines. (2) Interior & (3) Exterior GFCIDuplex receptacles with tester will be used as outlets.
- ⑪ LIGHTING: (10) Lighting shall be a twin fluorescent light with tube covers. (4 of 10) Interior fixtures shall be equip with Fluorescent Emergency Ballasts; Model # I-24, Manufactured by IOTA Engineering Co.
- ⑫ HEAT: N/A
- ⑬ COUNTER: 24" Plastic Laminate counter full length of building mounted 30" A.F.F.
- ⑭ HVAC: (4) Thru - Wall 11,600 Btuh cool A/C unit with 11,600 Btuh Electric Heat; 230 Volts.
- ⑮ FIRE ALARM: (3) Simplex Grinnell "TrueAlarm" Analog Detection Systems; Fire Alarm to be supplied and installed by fire suppression contractor.
- ⑯ EXIT SIGN: (4) Cooper Lighting "Sure Lites" Model # UNH-1-SRW; run on emergency power; surface mount to interior walls above door jambs.

REVISION STATUS OF SHEETS		
-	-	REV
2	1	SH
CERTIFICATION		

CUSTOMER NAME

CUSTOMER ADDRESS

CITY, STATE ZIP



AUSTIN MOHAWK & CO., INC.

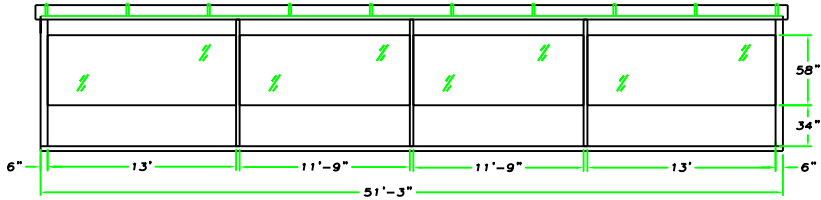
2175 BEECHGROVE PLACE  
 UTICA, NY 13501  
 PHONE: 315.793.3000  
 TOLL FREE: 1.800.765.3110  
 FAX: 315.793.9370

WEBSITE: www.austinmohawk.com  
 E-mail: info@austinmohawk.com

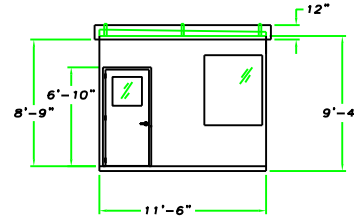
TITLE:	11'-6" X 51'-3" PROFESSIONAL PRESSBOX
JOB NO:	
LOCATION:	
MOD NO:	PPB1251
COLOR:	
DATE:	
DRAWN BY:	
APPROVED BY:	
SCALE:	1/4" = 1'
SHEET:	1 of 2

Notice - All Star Bleachers claims proprietary rights in the information disclosed on this drawing. It is issued in confidence for engineering information only and may not be used, in whole or in part, to manufacture anything whether or not shown hereon, reproduced or disclosed to anyone without direct written permission from All Star Bleachers

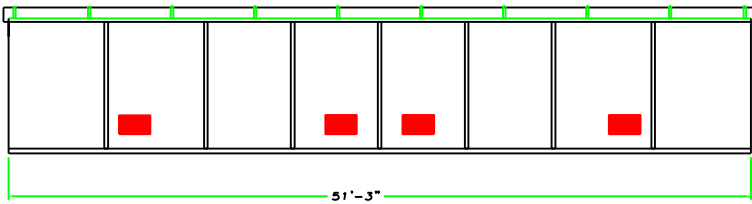
ELEVATION A



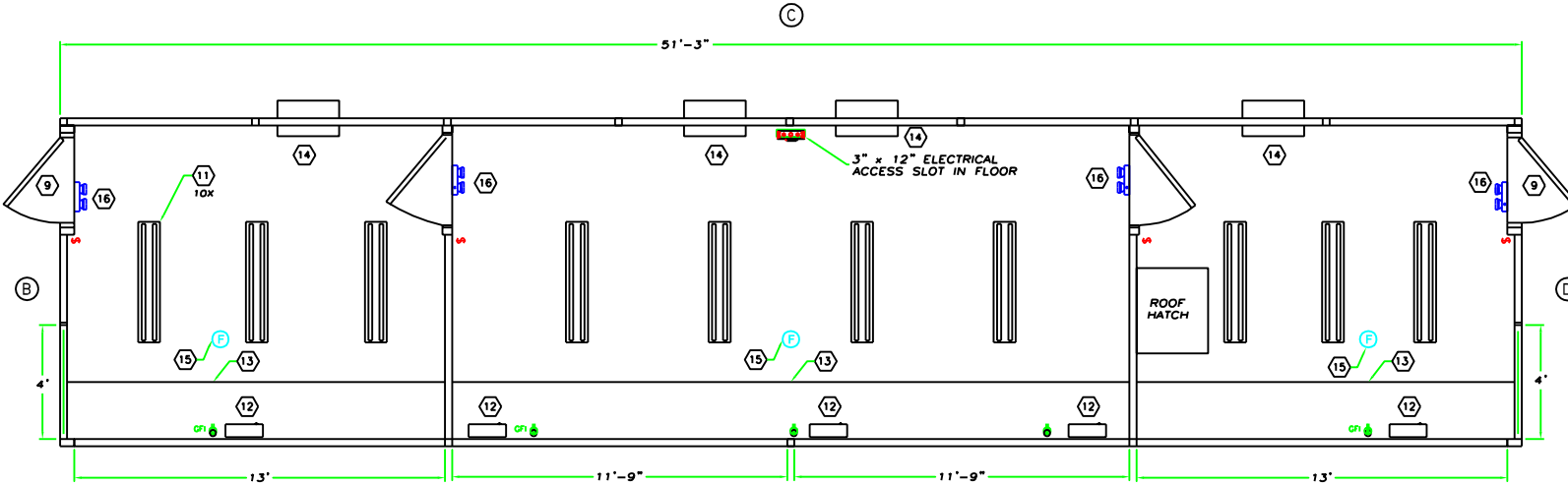
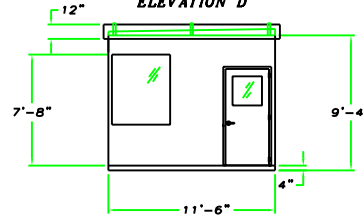
ELEVATION B



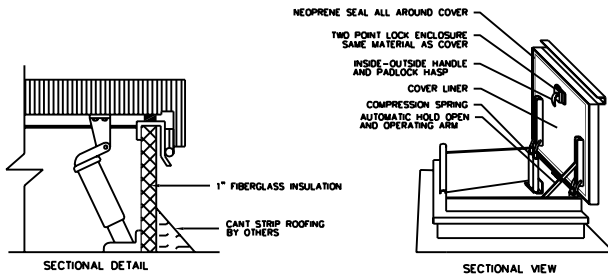
ELEVATION C



ELEVATION D



PLAN VIEW  
1/2" = 1'



CERTIFICATION

CUSTOMER NAME

CUSTOMER ADDRESS

CITY, STATE ZIP



AUSTIN MOHAWK & CO.,  
INC.

2175 BEECHGROVE PLACE  
UTICA, NY 13501  
PHONE: 315.793.3000  
TOLL FREE: 1.800.765.3110  
FAX: 315.793.9370

WEBSITE: [www.austinmohawk.com](http://www.austinmohawk.com)  
E-mail: [info@austinmohawk.com](mailto:info@austinmohawk.com)

TITLE: 11'-6" X 51'-3"  
PROFESSIONAL PRESSBOX

JOB NO:

LOCATION:

MOD NO: PPB1251

COLOR:

DATE:

DRAWN BY:

APPROVED BY:

SCALE: 1/4" = 1'

SHEET: 2 of 2