

# BOTTOM UNIT SPECIFICATIONS:

Notice - All Star Bleachers claims proprietary rights in the information disclosed on this drawing. It is issued in confidence for engineering information only and may not be used, in whole or in part, to manufacture anything whether or not shown hereon, reproduced or disclosed to anyone without direct written permission from All Star Bleachers

- A. GENERAL: Pre-assemble building of steel construction.
- B1 DIMENSIONS: 8' (2438.4 mm) wide x 30' (9144.0 mm) long and 96" (2438.4 mm) nominal outside height.
- B2 FRAME: Framing shall be 14 ga (1.78 mm) or heavier mechanical tube. All joints shall be MIG welded.
- B3 BASE/FLOOR: Building to typically be constructed on a 4" galvanized mechanical tube frame. Floor assembly to be comprised of 3/16" aluminum tread plate finished floor.
- B4 WALL PANELS: Wall panels shall be 16 ga exterior, 3" (76.2 mm), E.P.S. insulation (3"- R-12), and a 16 ga inside face. Panels shall be galvanized and shall be MIG welded into place.
- B5 CEILING: Interior ceiling shall be foam core panel system providing smooth flat interior, constructed from 24 ga prefinished white steel with expanded polystyrene core.
- B6 ROOF: N/A (see TOP UNIT SPECIFICATIONS)
- B7 FINISH: Surfaces shall be painted using an epoxy/urethane prime to paint system designed to withstand salt spray and freeze thaw testing.
- B8 WINDOWS: No fixed windows. Sliding and cashier windows shall be 3/4" (19.05 mm) clear tempered safety glass. Window frames shall be anodized aluminum. Moving windows shall be supplied with insect screen & locking device.
- B9 DOORS: (2) Swing doors shall be aluminum commercial grade with 3 hinges and closure arm. Doors shall be supplied with keyed alike mortise locks w/removable cylinders.
- B10 ELECTRICAL: Electrical shall be wired according to N.E.C. Standards. Load center shall be a 125 amp, 120/240 volt unit with 8/16 open circuits. Wiring shall be within surface mounted EMT conduit. (2) GFCI duplex receptacle with tester is used as an outlet.
- B11 LIGHTING: Lighting shall be a dual bulb fluorescent light.
- B12 HEAT: Heating shall be HEAVY DUTY wall mounted electric with fan forced operation, 3000/4000w/10,000 BTU, 208/230V and thermostat in an enamel coated 20 ga cabinet.

CERTIFICATION

CUSTOMER NAME

CUSTOMER ADDRESS

CITY, STATE ZIP



AUSTIN MOHAWK & CO.,  
INC.

2175 BEECHGROVE PLACE  
UTICA, NY 13501  
PHONE: 315.793.3000  
TOLL FREE: 1.800.765.3110  
FAX: 315.793.9370

WEBSITE: [www.austinmohawk.com](http://www.austinmohawk.com)  
E-mail: [info@austinmohawk.com](mailto:info@austinmohawk.com)

TITLE: 8'-0" X 30'-0"  
ALUMINUM PRESSBOX

JOB NO:

LOCATION:

MOD NO: DDPB830

COLOR:

DATE:

DRAWN BY:

APPROVED BY:

SCALE: 1/4" = 1'

SHEET: 1 of 3

# TOP UNIT SPECIFICATIONS:

Notice - All Star Bleachers claims proprietary rights in the information disclosed on this drawing. It is issued in confidence for engineering information only and may not be used, in whole or in part, to manufacture anything whether or not shown hereon, reproduced or disclosed to anyone without direct written permission from All Star Bleachers

- A. GENERAL: Pre-assemble building fabricated from low maintenance, lightweight corrosive resistant aluminum (factory fabricated).
- T1 DIMENSIONS: 8' wide x 30' long and 103" (2616.2 mm) outside height. Interior dimension from floor to ceiling shall be 85" (2159 mm).
- T2 FRAME CONSTRUCTION: Provide structural framing of 6063-T6 aluminum alloy extrusions. Members shall have a color to be determined painted finish. Connections shall be fastened internally to framing systems using mechanical fasteners or MIG welded where necessary.
- T3 BASE / FLOOR: Floor structure shall be layered assembly, consisting of 1 piece of 3/4" plywood, 1 piece of 7/16" OSB laminated together with .032 mill finish aluminum underside and a finished floor of nonskid aluminum tread plate. Floor is mounted to 4" tube steel base frame.
- T4 LOWER WALL PANEL: Exterior shall be .032 painted aluminum (color to be determined) , 3" (76.2 mm) insulation and .032 interior aluminum. Overall thickness of panel shall be 3" (76.2 mm).
- T5 CEILING: Interior ceiling shall be foam core panel system providing smooth flat interior, constructed from 24 ga prefinished white steel with expanded polystyrene core.
- T6 ROOF: Constructed using galvanized 20 ga, G-90 interlocking pan sections. Sections are 3" (76.2 mm) high varying widths able to support minimum of 40psf (1915 Pa) live load. Roof drains into full perimeter gutter system.
- T7 WINDOWS: No fixed windows. (6) Sliding windows shall have aluminum frame and 3/16" (4.7625 mm) tempered safety glass and locks. Glass shall be glazed within wall system extrusions and not fastened to exterior wall.
- T8 DOORS: Access to top unit to be through hatch in floor. Hatch constructed of galvanized steel with cover.
- T9 ELECTRICAL: Electrical shall be wired according to N.E.C. Standards. All electrical items will be wired to a junction box for connection to load center in lower unit. Wiring shall be #12 within surface mounted EMT conduit lines. (2) GFCI duplex outlets will be provided.
- T10 LIGHTING: Lighting shall be twin fluorescent lights with tube covers.
- T11 HEAT: (OPTIONAL) Heating shall be HEAVY DUTY wall mounted electric with fan forced operation, 3000/4000w/10,000 BTU, 208/230V and thermostat in an enamel coated 20 ga steel cabinet.

CERTIFICATION

CUSTOMER NAME

CUSTOMER ADDRESS  
CITY, STATE ZIP



AUSTIN MOHAWK & CO.,  
INC.

2175 BEECHGROVE PLACE  
UTICA, NY 13501  
PHONE: 315.793.3000  
TOLL FREE: 1.800.765.3110  
FAX: 315.793.9370

WEBSITE: [www.austinmohawk.com](http://www.austinmohawk.com)  
E-mail: [info@austinmohawk.com](mailto:info@austinmohawk.com)

TITLE: 8'-0" X 30'-0"  
ALUMINUM PRESSBOX

JOB NO:

LOCATION:

MOD NO: DDPB830

COLOR:

DATE:

DRAWN BY:

APPROVED BY:

SCALE: 1/4" = 1'

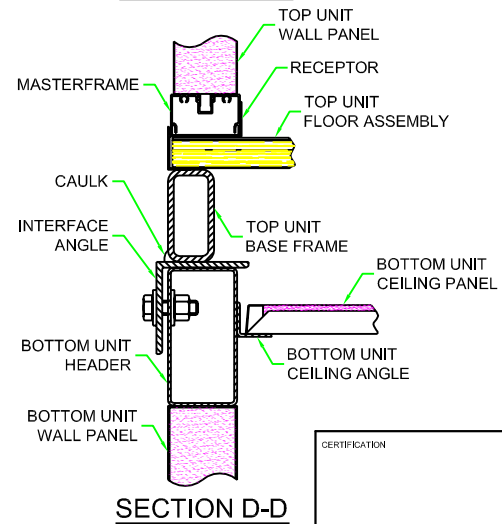
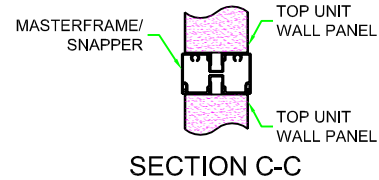
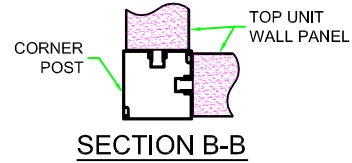
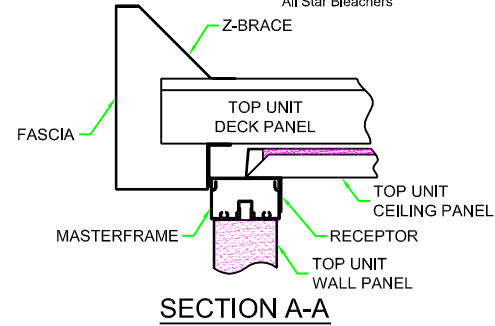
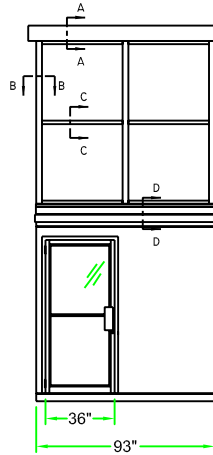
SHEET: 1 of 3

Notice - All Star Bleachers claims proprietary rights in the information disclosed on this drawing. It is issued in confidence for engineering information only and may not be used, in whole or in part, to manufacture anything whether or not shown herein, reproduced or disclosed to anyone without direct written permission from All Star Bleachers

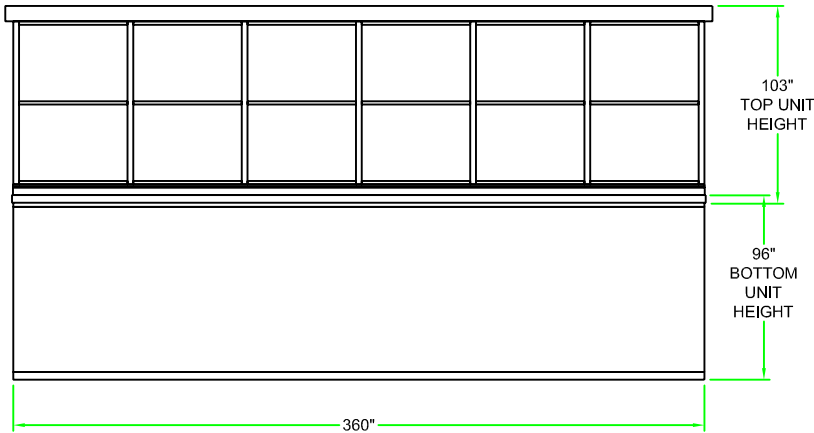
**ELEVATION A**



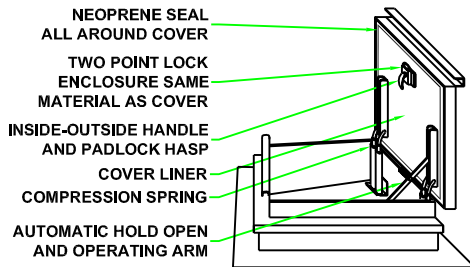
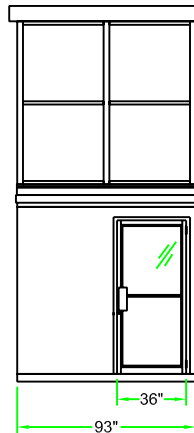
**ELEVATION B**



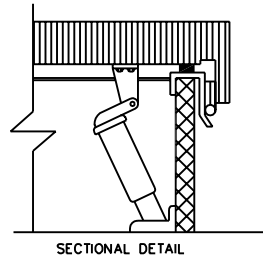
**ELEVATION C**



**ELEVATION D**



**HATCH DETAIL**



CUSTOMER NAME

CUSTOMER ADDRESS

CITY, STATE ZIP



**AUSTIN MOHAWK & CO., INC.**

2175 BEECHGROVE PLACE  
 UTICA, NY 13501  
 PHONE: 315.793.3000  
 TOLL FREE: 1.800.765.3110  
 FAX: 315.793.9370

WEBSITE: [www.austinmohawk.com](http://www.austinmohawk.com)  
 E-mail: [info@austinmohawk.com](mailto:info@austinmohawk.com)

TITLE: 8'-0" X 30'-0"  
 ALUMINUM PRESSBOX

JOB NO:

LOCATION:

MOD NO: DDPB830

COLOR:

DATE:

DRAWN BY:

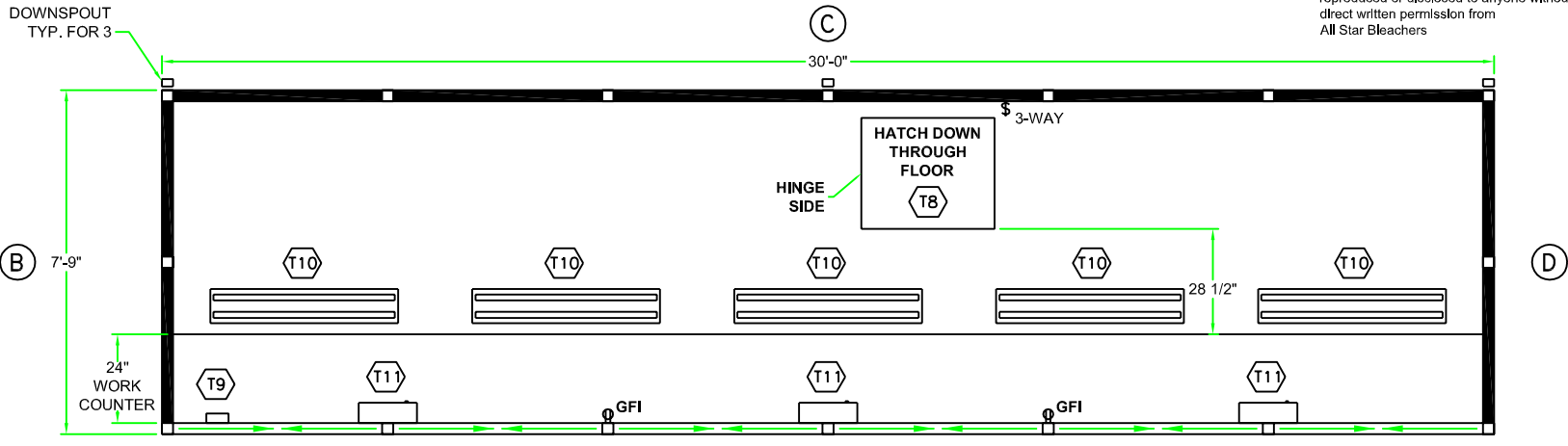
APPROVED BY:

SCALE: 1/4" = 1'

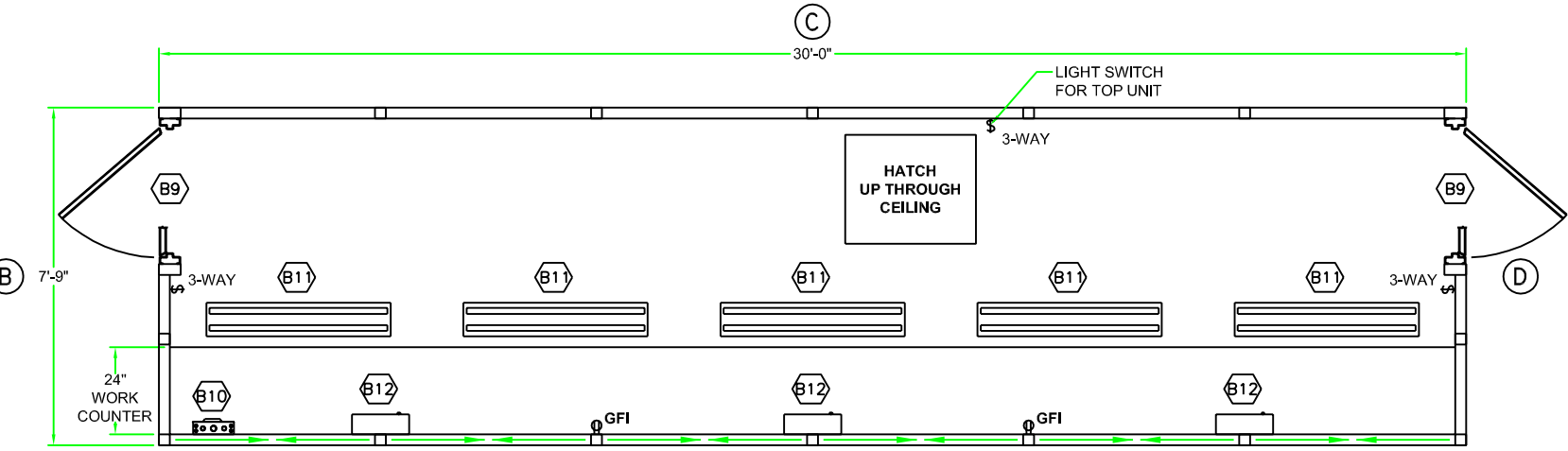
SHEET: 2 of 3

CERTIFICATION

Notice - All Star Bleachers claims proprietary rights in the information disclosed on this drawing. It is issued in confidence for engineering information only and may not be used, in whole or in part, to manufacture anything whether or not shown hereon, reproduced or disclosed to anyone without direct written permission from All Star Bleachers



TOP UNIT PLAN VIEW



BOTTOM UNIT PLAN VIEW

CERTIFICATION

CUSTOMER NAME  
 CUSTOMER ADDRESS  
 CITY, STATE ZIP



AUSTIN MOHAWK & CO., INC.  
 2175 BEECHGROVE PLACE  
 UTICA, NY 13501  
 PHONE: 315.793.3000  
 TOLL FREE: 1.800.765.3110  
 FAX: 315.793.9370  
 WEBSITE: www.austinmohawk.com  
 E-mail: info@austinmohawk.com

TITLE:	8'-0" X 30'-0" ALUMINUM PRESSBOX
JOB NO:	
LOCATION:	
MOD NO:	DDPB830
COLOR:	
DATE:	
DRAWN BY:	
APPROVED BY:	
SCALE:	1/4" = 1'
SHEET:	3 of 3