

GENERAL BUILDING SPECIFICATIONS:

Notice - All Star Bleachers claims proprietary rights in the information disclosed on this drawing. It is issued in confidence for engineering information only and may not be used, in whole or in part, to manufacture anything whether or not shown hereon, reproduced or disclosed to anyone without direct written permission from All Star Bleachers

- A. GENERAL: Pre-assemble building fabricated from low maintenance, lightweight corrosive resistant aluminum (factory fabricated). Building exterior shall have no exposed fasteners.
- ① DIMENSIONS: 7'-9" wide x 18'-0" long and 142-1/2" (3632.2 mm) nominal outside height. Interior dimension from floor to ceiling shall be nominal 84" (2133.6 mm).
- ② FRAME CONSTRUCTION: Provide structural framing of 6063-T6 aluminum alloy extrusions. Members shall have a CLEAR ANODIZED finish. Connections shall be fastened internally to framing systems using mechanical fasteners or MIG welded where necessary.
- ③ BASE / FLOOR: Building to typically be constructed on a 4" galvanized mechanical tube frame. Floor assembly to be comprised of 3/16" aluminum tread plate finished floor. Floor to be insulated to R-19 with foam insulation board.
- ④ LOWER WALL PANEL: Exterior shall be .032 CLEAR ANODIZED aluminum, (1) layer of 7/16" OSB, 2 1/2" (63.5 mm) rigid insulation (R-26) and .032 interior aluminum. Overall thickness of panel shall be 3" (76.2 mm).
- ⑤ CEILING: Interior ceiling shall be foam core panel system providing smooth flat interior, constructed from 24 ga prefinished white steel with foam insulation board (R-19) and 7/16" OSB.
- ⑥ ROOF: Constructed using galvanized 20 ga, G-60 interlocking pan sections. Sections are 3" (76.2 mm) high varying widths able to support minimum of 40 psf (1915 Pa) live load. Roof drains into full perimeter gutter system.
- ⑦ WINDOWS: No fixed windows. Sliding windows (4) shall have aluminum frame and 3/4" (19.05 mm) clear insulated tempered safety glass, insect screen, and locking device. Glass shall be glazed within wall system extrusions and not fastened to exterior wall. Glass sealed with concealed gasket system.
- ⑧ DOOR: Sliding door shall be extruded aluminum frame, top hung style using an overhead track and heavy duty ball bearing nylon tires with steel hub. Door shall be supplied with mortise hook bolt lockset with removable cylinder.
- ⑨ ELECTRICAL: Electrical shall be wired according to N.E.C. Standards. Load center shall be a 125 amp, 120/240 volt unit with 8/16 open circuits. Wiring shall be #12 within surface mounted EMT conduit lines, and included shall be (2) GFCI duplex receptacles with tester and (2) standard duplex receptacles.
- ⑩ LIGHTING: Lighting shall be a dual bulb fluorescent light enclosed Bezels.
- ⑪ COUNTER: Full length work counter "Scorers table", 18"-24" deep, 3/4" white "Melamine" counter top with drop wire grommets at receptacle locations.
- ⑫ HVAC: A/C unit to be thru-wall with heat, 11,600/11,400 BTUH (cooling), 11,600/9,500 BTUH (electric heat). 9.0/9.0 E.E.R. 230/208 volts.
- ⑬ CAMERA DECK: Unit to be supplied with camera deck, shipped loose and installed by others in field.

CERTIFICATION

CUSTOMER NAME

CUSTOMER ADDRESS

CITY, STATE ZIP



AUSTIN MOHAWK & CO.,
INC.

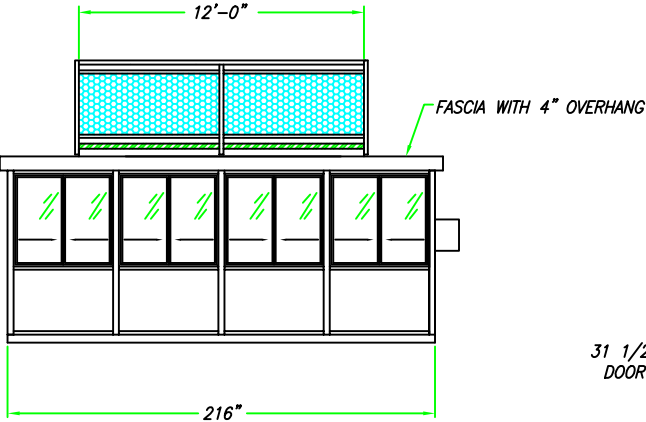
2175 BEECHGROVE PLACE
UTICA, NY 13501
PHONE: 315.793.3000
TOLL FREE: 1.800.765.3110
FAX: 315.793.9370

WEBSITE: www.austinmohawk.com
E-mail: info@austinmohawk.com

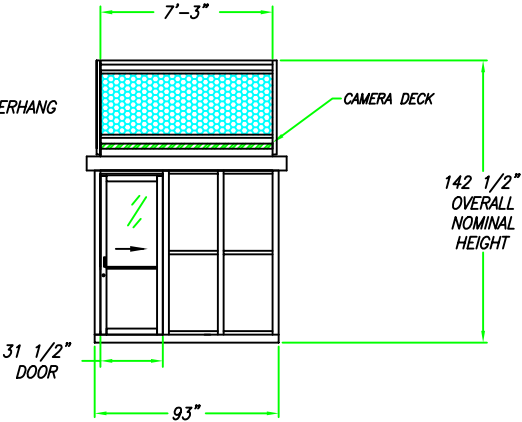
TITLE:	7-9" X 18'-0" VARSITY PRESSBOX - WITH CD
JOB NO:	
LOCATION:	
MOD NO:	VPB818-CD
COLOR:	
DATE:	
DRAWN BY:	
APPROVED BY:	
SCALE:	1/4" = 1'
SHEET:	1 of 3

Notice - All Star Bleachers claims proprietary rights in the information disclosed on this drawing. It is issued in confidence for engineering information only and may not be used, in whole or in part, to manufacture anything whether or not shown hereon, reproduced or disclosed to anyone without direct written permission from All Star Bleachers

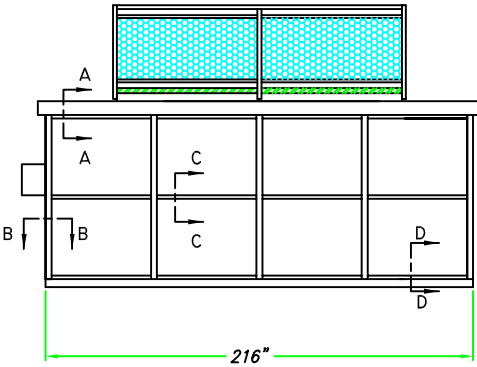
ELEVATION A



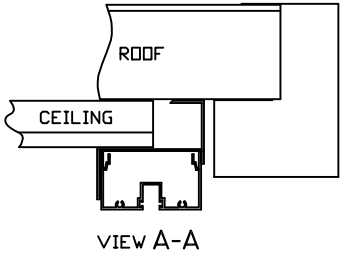
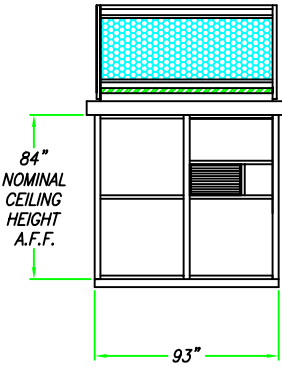
ELEVATION B



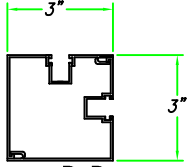
ELEVATION C



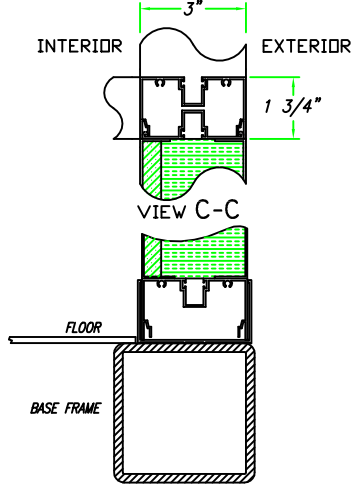
ELEVATION D



VIEW A-A



VIEW B-B



VIEW C-C

VIEW D-D

CERTIFICATION

CUSTOMER NAME

CUSTOMER ADDRESS

CITY, STATE ZIP



AUSTIN MOHAWK & CO., INC.

2175 BEECHGROVE PLACE
 UTICA, NY 13501
 PHONE: 315.793.3000
 TOLL FREE: 1.800.765.3110
 FAX: 315.793.9370

WEBSITE: www.austinmohawk.com
 E-mail: info@austinmohawk.com

TITLE: 7'-9" X 18'-0"
 VARSITY PRESSBOX- WITH CD

JOB NO:

LOCATION:

MOD NO: VPB818-CD

COLOR:

DATE:

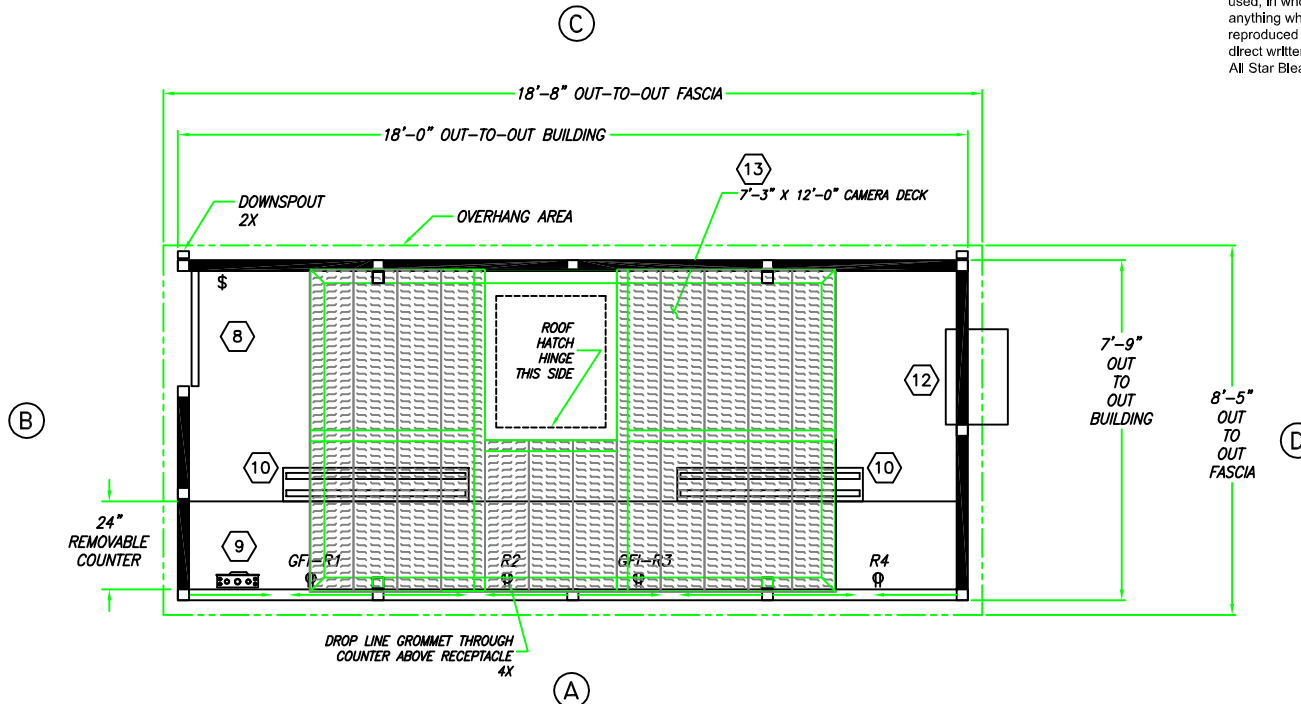
DRAWN BY:

APPROVED BY:

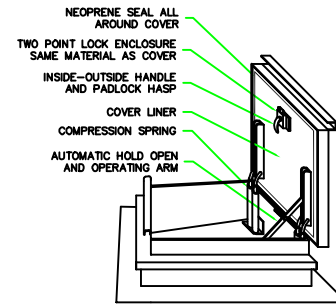
SCALE: 1/4" = 1'

SHEET: 2 of 3

Notice - All Star Bleachers claims proprietary rights in the information disclosed on this drawing. It is issued in confidence for engineering information only and may not be used, in whole or in part, to manufacture anything whether or not shown hereon, reproduced or disclosed to anyone without direct written permission from All Star Bleachers

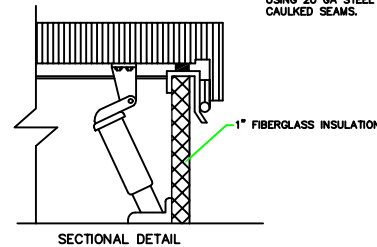


PLAN VIEW
1/2" = 1'



SECTIONAL VIEW

ROOF HATCH TO BE MOUNTED TO 3" x 3" x 1/8" TUBE STEEL H-FRAME USING TEK SCREWS EVERY 24" OC. HATCH FLASHED USING 20 GA STEEL TRIM WITH CAULKED SEAMS.



SECTIONAL DETAIL

CERTIFICATION



AUSTIN MOHAWK & CO., INC.

2175 BEECHGROVE PLACE
UTICA, NY 13501
PHONE: 315.793.3000
TOLL FREE: 1.800.765.3110
FAX: 315.793.9370

WEBSITE: www.austinmohawk.com
E-mail: info@austinmohawk.com

TITLE:	7'-9" X 18'-0" VARSITY PRESSBOX - WITH CD
JOB NO:	
LOCATION:	
MOD NO:	VPB818-CD
COLOR:	
DATE:	
DRAWN BY:	
APPROVED BY:	
SCALE:	1/4" = 1'
SHEET:	3 of 3

CUSTOMER NAME

CUSTOMER ADDRESS

CITY, STATE ZIP