

GENERAL BUILDING SPECIFICATIONS:

Notice - All Star Bleachers claims proprietary rights in the information disclosed on this drawing. It is Issued In confidence for engineering information only and may not be used, in whole or in part, to manufacture anything whether or not shown hereon, reproduced or disclosed to anyone without direct written permission from All Star Bleachers

- A. GENERAL: Pre-assemble building fabricated from low maintenance, lightweight corrosive resistant aluminum (factory fabricated). Building exterior shall have no exposed fasteners.
- ① DIMENSIONS: 6'-0" wide x 8'-0" long and 93 3/4" Nominal outside height. Interior dimension from floor to ceiling shall be 83 3/4" (2126.8 mm).
- ② FRAME CONSTRUCTION: Provide structural framing of 6063-T6 aluminum alloy extrusions. Members shall have a AUSTIN WHITE finish. Connections shall be fastened internally to framing systems using mechanical fasteners or MIG welded where necessary. Exposed fasteners on framing system are not acceptable.
- ③ BASE / FLOOR: Building to typically be constructed on a 4" galvanized mechanical tube frame. Frame shall have fork lift pockets. Floor assembly to be comprised of 3/16" aluminum tread plate finished floor.
- ④ LOWER WALL PANEL: Exterior shall be .032 AUSTIN WHITE aluminum, 3" (76.2 mm) expanded polystyrene insulation (R-12) and .032 interior aluminum. Overall thickness of panel shall be 3" (76.2 mm).
- ⑤ CEILING: Interior ceiling shall be foam core panel system providing smooth flat interior, constructed from 24 ga, prefinished white steel with expanded polystyrene core.
- ⑥ ROOF: Constructed using galvanized 20/24 ga, G-60 interlocking pan sections. Sections are 3" (76.2 mm) high varying widths able to support minimum of 40 psf (1915 Pa) live load. Roof drains into full perimeter gutter system.
- ⑦ WINDOWS: Fixed windows shall be single pane 1/4" (6.35 mm) GRAY tinted tempered safety glass with reflective film. Sliding window shall have aluminum frame and 1/4" (6.35 mm) GRAY tinted tempered safety glass with reflective film, insect screen, and locking device. Glass shall be glazed within wall system extrusions and not fastened to exterior wall. Glass sealed with concealed gasket system.
- ⑧ DOOR: (Qty-1) 36" SWING door shall be extruded aluminum frame with HALF GLASS (1/4" single pane GRAY tinted tempered glass with reflective film). Door shall be supplied with lockset with removable cylinder and hydraulic closer. Door color to be AUSTIN WHITE.
- ⑨ ELECTRICAL: Electrical shall be wired according to N.E.C. Standards. Load center shall be a 125 amp, 120/240 volt unit with 8/16 open circuits. Wiring shall be within surface mounted EMT conduit, and included shall be (5) GFI duplex receptacle with tester and (2) quad data jacks.
- ⑩ LIGHTING: Lighting shall be a dual bulb fluorescent light. Exterior lighting to be (1) 70W mini wall pack exterior light.
- ⑪ HVAC: A/C unit to be a roof mount 13,500 BTU (cooling), 5,600 BTU (heating), 110V unit.
- ⑫ COUNTER: Full width x 18"-24" deep x 3/4" thick white melamine work counter with (1) cable grommet.

INCLUDED OPTIONS:

- 12" X 36" EXTERIOR COUNTER
- SPEAK-THRU WINDOW
- 4"H X 12"W X 19"DEEP TRANSACTION DRAWER

REVISION STATUS OF SHEETS		
-	-	REV
2	1	SH

CERTIFICATION

CUSTOMER NAME

ADDRESS

CITY, STATE ZIP



AUSTIN MOHAWK & CO.,
INC.

2175 BEECHGROVE PLACE
UTICA, NY 13501
PHONE: 315.793.3000
TOLL FREE: 1.800.765.3110
FAX: 315.793.9370

WEBSITE: www.austinmohawk.com
E-mail: info@austinmohawk.com

TITLE: 6'-0" X 8'-0"
Aluminum Ticket Booth

JOB NO:

LOCATION:

MOD NO: TB68

COLOR:

DATE:

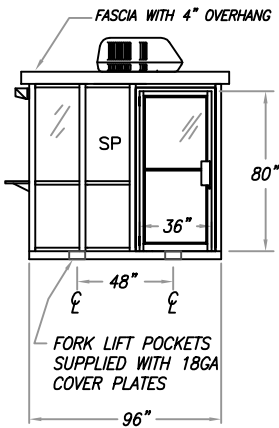
DRAWN BY:

APPROVED BY:

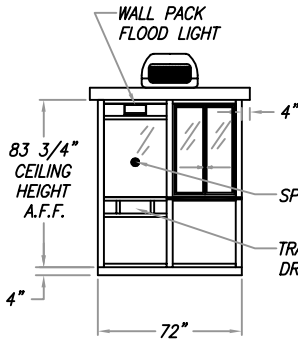
SCALE: 1/4" = 1'

SHEET: 1 of 2

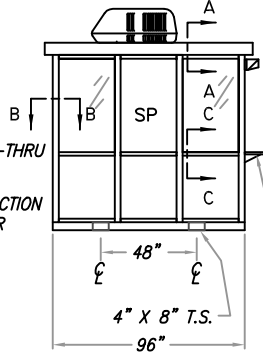
ELEVATION A



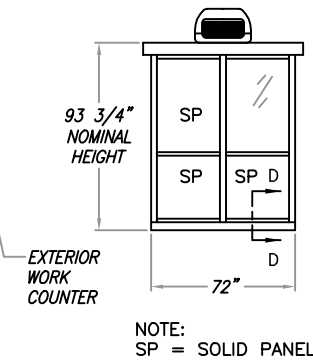
ELEVATION B



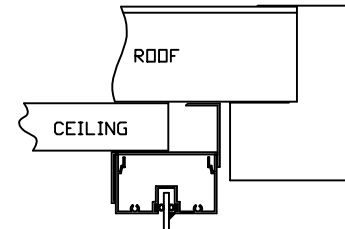
ELEVATION C



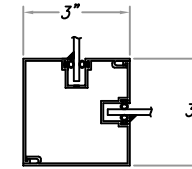
ELEVATION D



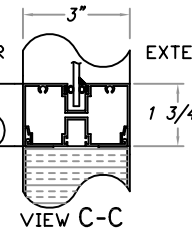
Notice - All Star Bleachers claims proprietary rights in the information disclosed on this drawing. It is issued in confidence for engineering information only and may not be used, in whole or in part, to manufacture anything whether or not shown hereon, reproduced or disclosed to anyone without direct written permission from All Star Bleachers



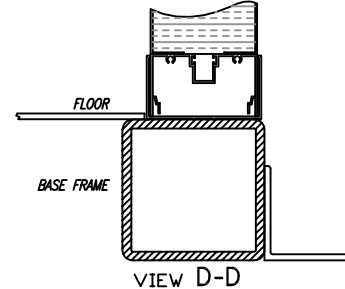
VIEW A-A



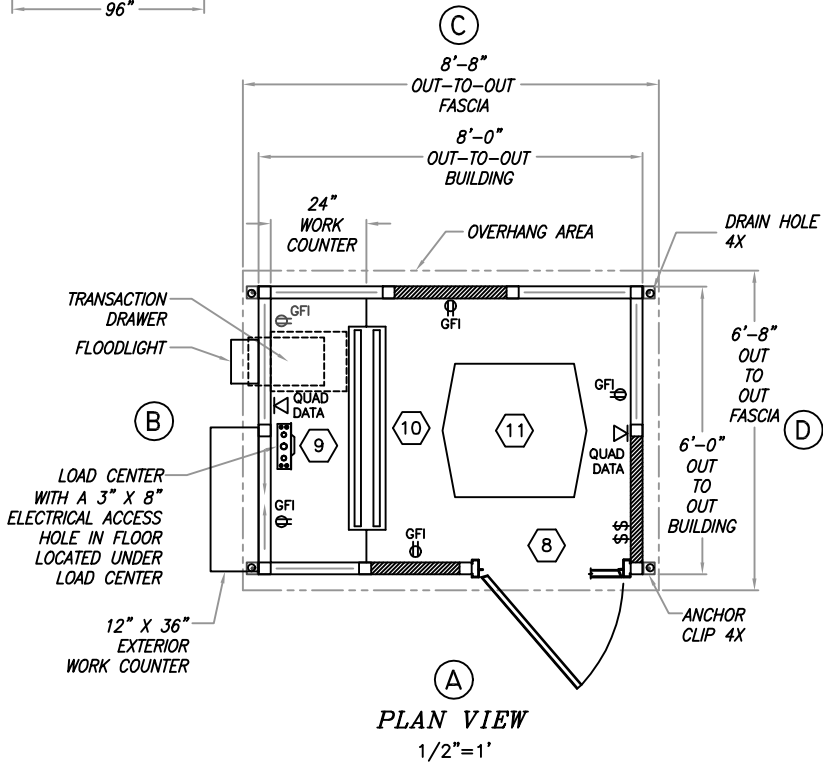
VIEW B-B



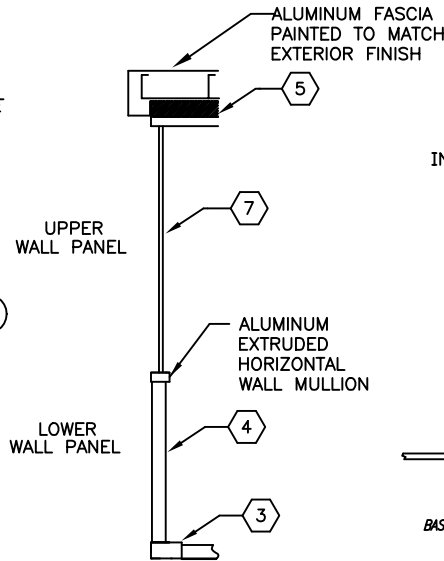
VIEW C-C



VIEW D-D



PLAN VIEW
1/2" = 1'



WALL SECTION DETAIL

CERTIFICATION

CUSTOMER NAME

CUSTOMER ADDRESS

CITY, STATE ZIP



AUSTIN MOHAWK & CO., INC.

2175 BEECHGROVE PLACE
UTICA, NY 13501
PHONE: 315.793.3000
TOLL FREE: 1.800.765.3110
FAX: 315.793.9370

WEBSITE: www.austinhawk.com
E-mail: info@austinhawk.com

TITLE:	6'-0" X 8'-0" Ticket Booth
JOB NO:	
LOCATION:	
MOD NO:	TB68
COLOR:	
DATE:	
DRAWN BY:	
APPROVED BY:	
SCALE:	1/4" = 1'
SHEET:	2 of 2