

# GENERAL BUILDING SPECIFICATIONS:

Notice - All Star Bleachers claims proprietary rights in the information disclosed on this drawing. It is issued in confidence for engineering information only and may not be used, in whole or in part, to manufacture anything whether or not shown hereon, reproduced or disclosed to anyone without direct written permission from All Star Bleachers

- A. GENERAL: Pre-assemble building fabricated from low maintenance, lightweight corrosive resistant aluminum (factory fabricated).
- 1 DIMENSIONS: 10'-0" wide x 24'-2 1/4" long and 106 1/2" (2705 mm) nominal outside height. Interior dimension from floor to ceiling shall be 83 1/2" (2120.9 mm) minimum.
- 2 FRAME CONSTRUCTION: Provide structural framing of 6063-T6 aluminum alloy extrusions. Members shall have a (CLEAR ANODIZED) finish. Connections shall be fastened internally to framing systems using mechanical fasteners or MIG welded where necessary.
- 3 BASE / FLOOR: Base structure shall consist of a 3/16" finished floor of nonskid aluminum diamond tread plate. Base is mounted to steel base frame. Floor to be insulated to R-19.
- 4 WALL PANELS: Exterior shall be .032 CLEAR ANODIZED aluminum, 3" (76.2 mm) insulation (R-15.4) and .032 interior aluminum. Overall thickness of panel shall be 3" (76.2 mm).
- 5 CEILING: Interior ceiling shall be foam core panel system providing smooth flat interior, constructed from 20 ga, prefinished white steel with expanded polystyrene core (R-19).
- 6 ROOF: Constructed using galvanized 20 ga, G-60 interlocking pan sections. Sections are 3" (76.2 mm) high varying widths able to support minimum of 40 psf (1915 Pa) live load. Roof drains into full perimeter gutter system. Roof to have a 6" perimeter overhang.
- 7 WINDOWS: Fixed windows shall be single pane 3/4" (19.05 mm) CLEAR INSULATED tempered safety glass. (Qty-6) Sliding windows shall have aluminum frame and 3/4" (19.05 mm) CLEAR INSULATED tempered safety glass, insect screen, and locking device. Glass shall be glazed within wall system extrusions and not fastened to exterior wall. Glass sealed with concealed gasket system.
- 8 DOOR: (Qty-2) Swing door shall be an aluminum commercial grade with 3 hinges and closure arm. Door shall be supplied with mortise lock w/removable cylinder. Door shall be half glass. Color to be CLEAR ANODIZED.
- 9 ELECTRICAL: Electrical shall be wired according to N.E.C. Standards. Load center shall be a 125 amp, single phase, 3-wire, 120/240 volt unit with 30 open circuits. Wiring shall be #12 within surface mounted EMT conduit. (QTY-2) GFI duplex receptacles with testers, and (QTY-6) standard duplex receptacles shall be installed.
- 10 LIGHTING: (QTY-8) Lighting shall be twin fluorescent lights with tube covers.
- 11 HVAC: (QTY-2) A/C unit to be high mount thru-wall 23,500/17, 3000 BTU (cooling/heating), 230/208V unit.

## EXCLUSION NOTE:

- CHAIRS/SEATING SHALL BE SUPPLIED BY OTHERS

REVISION STATUS OF SHEETS		
-	-	REV
2	1	SH
CERTIFICATION		

CUSTOMER NAME

CUSTOMER ADDRESS

CITY, STATE ZIP



**AUSTIN MOHAWK & CO.,  
INC.**

2175 BEECHGROVE PLACE  
UTICA, NY 13501  
PHONE: 315.793.3000  
TOLL FREE: 1.800.765.3110  
FAX: 315.793.9370

WEBSITE: [www.austinmohawk.com](http://www.austinmohawk.com)  
E-mail: [info@austinmohawk.com](mailto:info@austinmohawk.com)

TITLE: 10'-0" X 24'-2 1/2"  
DIVISION 1 PRESSBOX

JOB NO:  
LOCATION:  
MOD NO: DIPB1024

COLOR:  
DATE:  
DRAWN BY:

APPROVED BY:

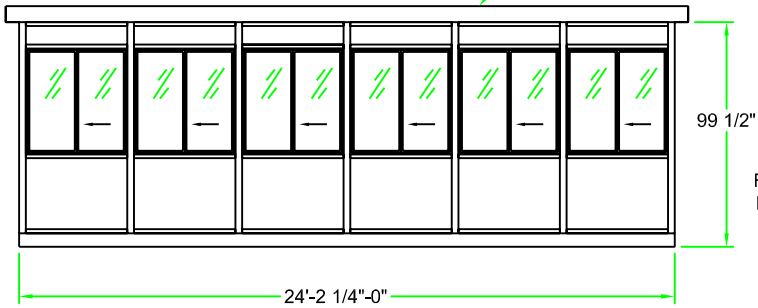
SCALE: 1/4" = 1'

SHEET: 1 of 2

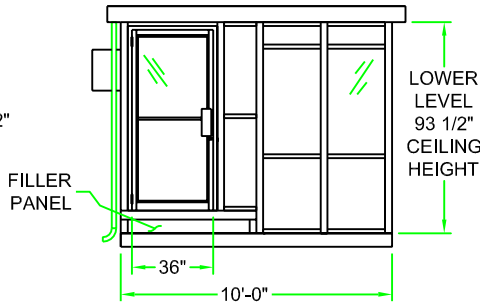
Notice - All Star Bleachers claims proprietary rights in the information disclosed on this drawing. It is issued in confidence for engineering information only and may not be used, in whole or in part, to manufacture anything whether or not shown herein, reproduced or disclosed to anyone without direct written permission from All Star Bleachers

ELEVATION A

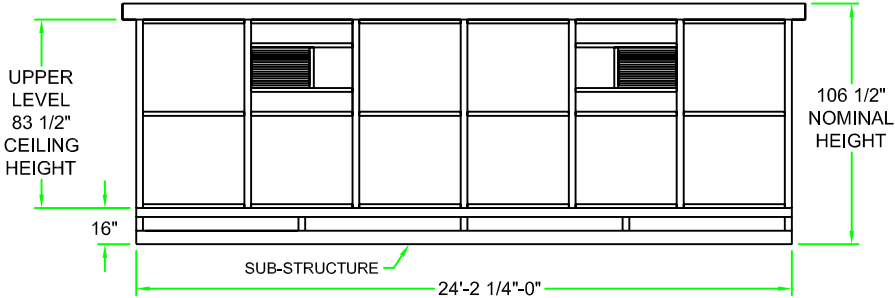
FASCIA W/ 6" PERIMETER OVERHANG



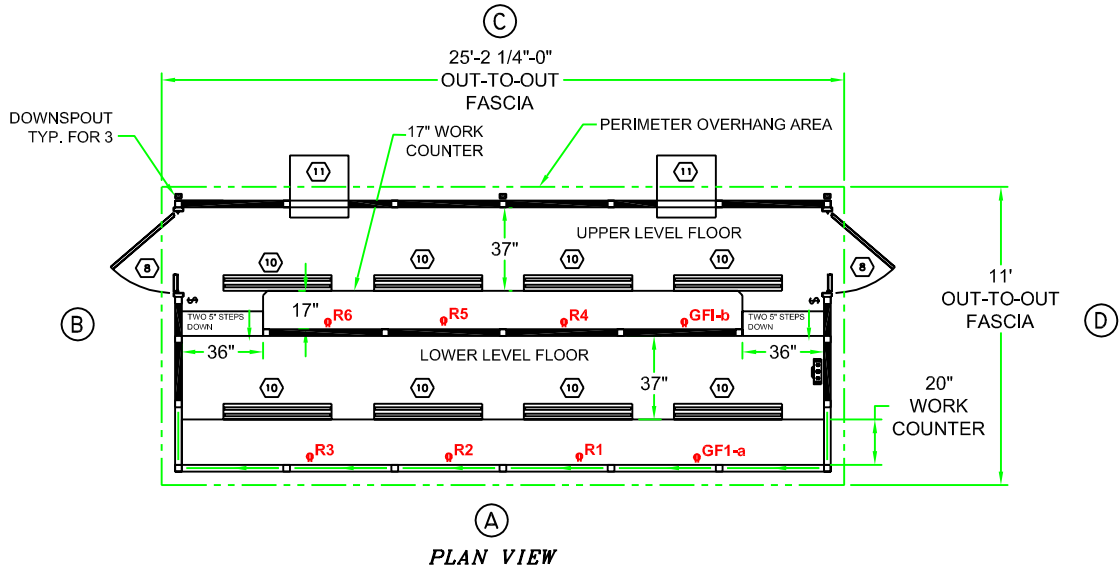
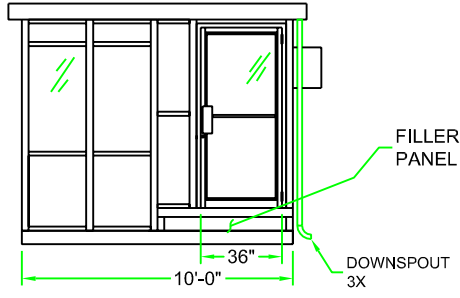
ELEVATION B



ELEVATION C



ELEVATION D



PLAN VIEW

CERTIFICATION

CUSTOMER NAME

CUSTOMER ADDRESS

CITY, STATE ZIP



AUSTIN MOHAWK & CO., INC.

2175 BEECHGROVE PLACE  
 UTICA, NY 13501  
 PHONE: 315.793.3000  
 TOLL FREE: 1.800.765.3110  
 FAX: 315.793.9370

WEBSITE: [www.austinmohawk.com](http://www.austinmohawk.com)  
 E-mail: [info@austinmohawk.com](mailto:info@austinmohawk.com)

TITLE: 10'-0" X 24'-2 1/2" DIVISION 1 PRESSBOX

JOB NO:

LOCATION:

MOD NO: DIPB1024

COLOR:

DATE:

DRAWN BY:

APPROVED BY:

SCALE: 1/4" = 1'

SHEET: 2 of 2