

GENERAL BUILDING SPECIFICATIONS:

- A. GENERAL: Pre-assemble building fabricated from low maintenance, lightweight corrosive resistant aluminum (factory fabricated). Building exterior shall have no exposed fasteners.
- 1 DIMENSIONS: 7'-9" wide x 20'-0" long and 105" nominal outside height not including camera deck. Interior dimension from floor to ceiling shall be 90" (2286.0 mm).
- 2 FRAME CONSTRUCTION: Provide structural framing of 6063-T6 aluminum alloy extrusions. Members shall have a CLEAR ANODIZED, AUSTIN WHITE OR QUAKER BRONZE finish. Connections shall be fastened internally to framing system using mechanical fasteners or MIG welded where necessary.
- 3 BASE / FLOOR: Building to typically be constructed on a mechanical tube frame. Floor assembly to be comprised of 3/16" aluminum tread plate finished floor. Floor to be insulated to R-25 with foam insulation board.
- 4 LOWER/UPPER WALL PANEL: Exterior shall be .032 CLEAR ANODIZED, AUSTIN WHITE OR QUAKER BRONZE aluminum, 7/16" OSB, 2 1/2" EPS insulation (R-12.1) and .032 interior CLEAR ANODIZED, AUSTIN WHITE OR QUAKER BRONZE aluminum. Overall thickness of panel shall be 3" (76.2 mm).
- 5 CEILING: Interior ceiling shall be foam core panel system providing smooth flat interior, constructed from 24 ga, prefinished white steel with batten fiber glass insulation (R-15).
- 6 ROOF: Constructed using galvanized 20 ga, G-60 interlocking pan sections. Sections are 3" (76.2 mm) high varying widths able to support minimum of 50 psf (2394 Pa) live load. Roof drains into full perimeter gutter system.
- 7 WINDOWS: No fixed windows. Sliding windows (Qty-4) shall have a CLEAR ANODIZED, aluminum frame and 3/4" (19.05 mm) CLEAR insulated tempered safety glass, insect screen, and locking device. Glass shall be glazed within wall system extrusions and not fastened to exterior wall. Glass sealed with concealed gasket system.
- 8 DOOR: Swing door shall be an aluminum commercial grade with 2 hinges and closer arm. Door shall be supplied with mortise lock w/removable cylinder. Door color to be CLEAR ANODIZED, AUSTIN WHITE OR QUAKER BRONZE.
- 9 ELECTRICAL: Electrical shall be wired according to N.E.C. Standards. Load center shall be a 125 amp, 120/240 volt unit with 8/16 open circuits. Wiring shall be within surface mounted EMT conduit, and included shall be (4) GFI duplex receptacles with tester inside press box, (2) each RJ-11 & RJ-45 phone and data jacks.
- 10 LIGHTING: Lighting (Qty-3) shall be dual bulb fluorescent lights with tube covers.
- 11 HEAT: Heating shall be (Qty-2) wall mounted electric with fan forced operation, 3000/4000w, 10000 BTU and thermostat in an enamel coated 20 ga steel cabinet.
- 12 SCORER'S TABLE: Full length, 18"-24" deep, 3/4" white "melamine" countertop with drop wire grommets at receptacle locations.
- 13 CAMERA DECK: 6'-0" x 16'-0" camera deck, roof top access by hatch and internal ladder. Perimeter fence (verticals, horizontals and chain link) shall be supplied.
- 14 SUBSTRUCTURE: All aluminum 13' nominal elevated substructure with 6' x 6' entry platform stairs and railings to last bleacher footboard shall be supplied.

Notice - All Star Bleachers claims proprietary rights in the information disclosed on this drawing. It is issued in confidence for engineering information only and may not be used, in whole or in part, to manufacture anything whether or not shown hereon, reproduced or disclosed to anyone without direct written permission from All Star Bleachers

CUSTOMER NAME

CUSTOMER ADDRESS

CITY, STATE ZIP



AUSTIN MOHAWK & CO.,
INC.

2175 BEECHGROVE PLACE
UTICA, NY 13501
PHONE: 315.793.3000
TOLL FREE: 1.800.765.3110
FAX: 315.793.9370

WEBSITE: www.austinmohawk.com
E-mail: info@austinmohawk.com

TITLE: 7'-9" X 20'-0"
DIVISION 1 PRESSBOX - WITH CD

JOB NO:

LOCATION:

MOD NO: DIPB820-CD

COLOR:

DATE:

DRAWN BY:

APPROVED BY:

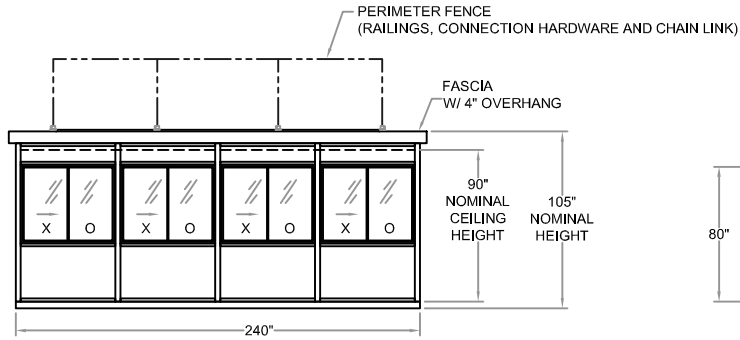
SCALE: 1/4" = 1'

SHEET: 1 of 2

REVISION STATUS OF SHEETS		
-	-	REV
2	1	SH

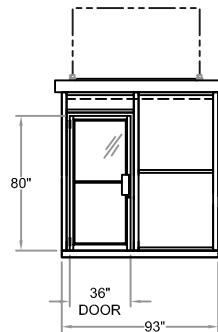
CERTIFICATION

ELEVATION A

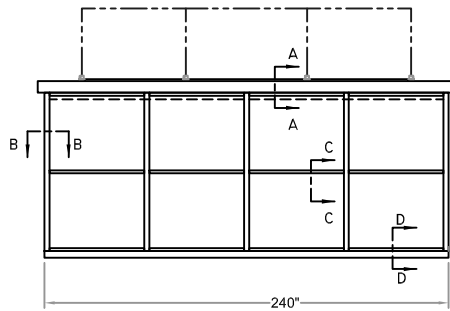


NOTE:
SLIDE WINDOWS VIEWED FROM EXTERIOR
X = OPERATING PANEL
O = STATIONARY

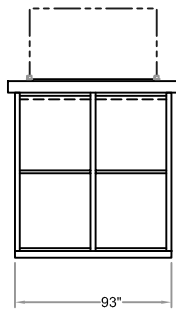
ELEVATION B



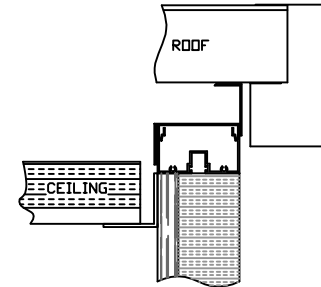
ELEVATION C



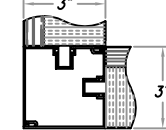
ELEVATION D



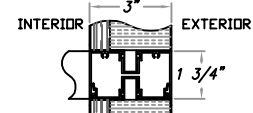
Notice - All Star Bleachers claims proprietary rights in the information disclosed on this drawing. It is issued in confidence for engineering information only and may not be used, in whole or in part, to manufacture anything whether or not shown hereon, reproduced or disclosed to anyone without direct written permission from All Star Bleachers



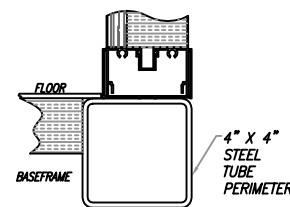
VIEW A-A



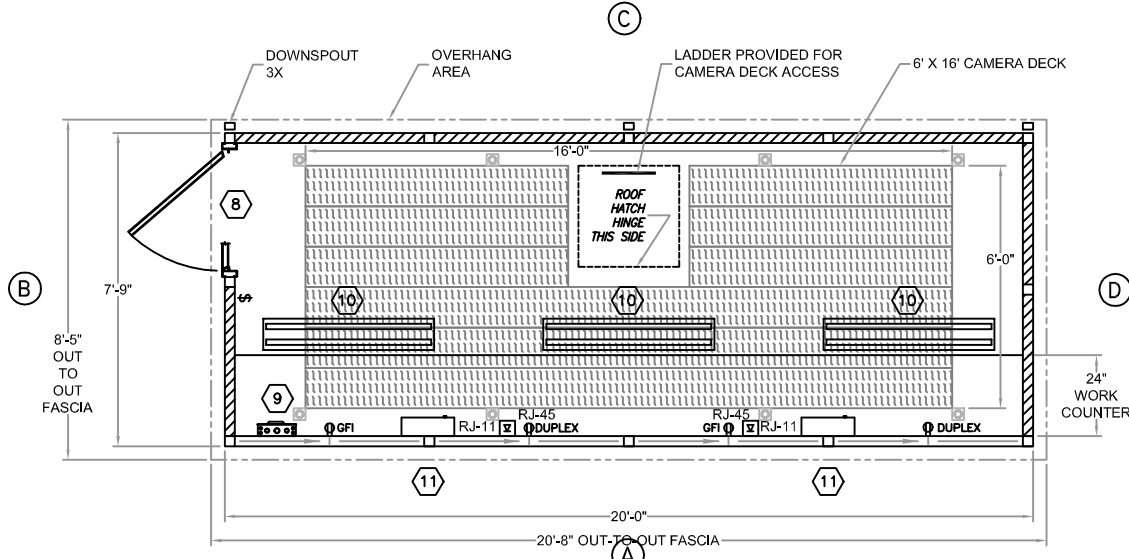
VIEW B-B



VIEW C-C



VIEW D-D



PLAN VIEW
SCALE: 1/2" = 1'

CUSTOMER NAME

CUSTOMER ADDRESS

CITY, STATE ZIP



AUSTIN MOHAWK & CO.,
INC.

2175 BEECHGROVE PLACE
UTICA, NY 13501
PHONE: 315.793.3000
TOLL FREE: 1.800.765.3110
FAX: 315.793.9370

WEBSITE: www.austinmohawk.com
E-mail: info@austinmohawk.com

TITLE: 7'-9" X 20'-0"
DIVISION 1 PRESSBOX - WITH CD

JOB NO:

LOCATION:

MOD NO: DIPB820-CD

COLOR:

DATE:

DRAWN BY:

APPROVED BY:

SCALE: 1/4" = 1'

SHEET: 2 of 2

CERTIFICATION