

GENERAL BUILDING SPECIFICATIONS:

Notice - All Star Bleachers claims proprietary rights in the information disclosed on this drawing. It is issued in confidence for engineering information only and may not be used, in whole or in part, to manufacture anything whether or not shown hereon, reproduced or disclosed to anyone without direct written permission from All Star Bleachers

- A. GENERAL: Pre-assemble building fabricated from low maintenance, lightweight corrosive resistant aluminum (factory fabricated). Building exterior shall have no exposed fasteners.
- 1 DIMENSIONS: 6' wide x 12' long and 142-1/2" +/- 1 1/2" (3619.5 mm) outside height. Interior dimension from floor to ceiling shall be nominal 83" (2108.2 mm).
- 2 FRAME CONSTRUCTION: Provide structural framing of 6063-T6 aluminum alloy extrusions. Members shall have a CLEAR ANODIZED finish. Connections shall be fastened internally to framing systems using mechanical fasteners or MIG welded where necessary.
- 3 BASE / FLOOR: Building to typically be constructed on a 4" galvanized mechanical tube frame. Floor assembly to be comprised of 3/16" aluminum tread plate finished floor.
- 4 LOWER WALL PANEL: Exterior shall be .032 CLEAR ANODIZED aluminum, 3" (76.2 mm) insulation (R-12) and .032 interior aluminum. Overall thickness of panel shall be 3" (76.2 mm).
- 5 CEILING: Interior ceiling shall be foam core panel system providing smooth flat interior, constructed from 24 ga prefinished white steel with foam insulation.
- 6 ROOF: Constructed using galvanized 24 ga, G-60 interlocking pan sections. Sections are 3" (76.2 mm) high varying widths able to support minimum of 40 psf (1915 Pa) live load. Roof drains into full perimeter gutter system.
- 7 WINDOWS: Fixed windows and sliding windows (2) with aluminum frame shall have 1/8" (3.18 mm) clear tempered safety glass, insect screen, and locking device. Glass shall be glazed within wall system extrusions and not fastened to exterior wall. Glass sealed with concealed gasket system.
- 8 DOOR: Sliding door shall be extruded aluminum frame, top hung style using an overhead track and heavy duty ball bearing nylon tires with steel hub. Door shall be supplied with mortise hook bolt lockset with removable cylinder.
- 9 ELECTRICAL: Electrical shall be wired according to N.E.C. Standards. Load center shall be a 125 amp, 120/240 volt unit with 8/16 open circuits. Wiring shall be #12 within surface mounted EMT conduit lines, and included shall be (1) GFCI duplex receptacle with tester.
- 10 LIGHTING: Lighting shall be a dual bulb fluorescent light.
- 11 COUNTER: Full length work counter "Scorers table".
- 12 HEAT: Heating shall be (2) HEAVY DUTY wall mounted electric with fan forced operation, 3000/4000w/10,000 BTU, 208/230V and thermostat in an enamel coated 20 ga cabinet.
- 13 CAMERA DECK: 5'-0" x 11'-0" camera deck, roof top access by hatch and internal ladder. Perimeter fence (verticals, horizontals and chain link) shall be supplied.

REVISION STATUS OF SHEETS		
-	-	REV
2	1	SH
CERTIFICATION		

CUSTOMER NAME
CUSTOMER ADDRESS
CITY, STATE ZIP

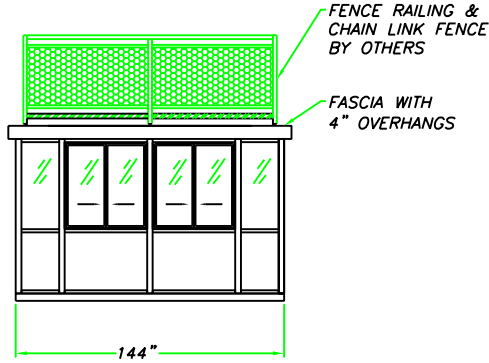


AUSTIN MOHAWK & CO., INC.
2175 BEECHGROVE PLACE
UTICA, NY 13501
PHONE: 315.793.3000
TOLL FREE: 1.800.765.3110
FAX: 315.793.9370
WEBSITE: www.austinmohawk.com
E-mail: info@austinmohawk.com

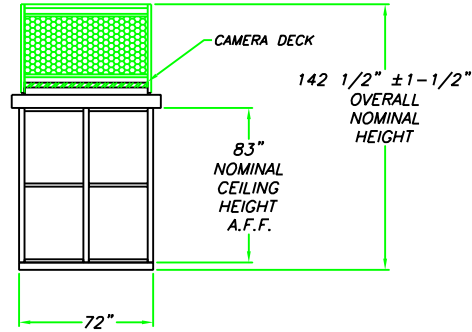
TITLE:	6'-0" X 12'-0" VARSITY PRESSBOX - WITH CD
JOB NO:	
LOCATION:	
MOD NO:	VPB612-CD
COLOR:	
DATE:	
DRAWN BY:	
APPROVED BY:	
SCALE:	1/4" = 1'
SHEET:	1 of 2

Notice - All Star Bleachers claims proprietary rights in the information disclosed on this drawing. It is issued in confidence for engineering information only and may not be used, in whole or in part, to manufacture anything whether or not shown hereon, reproduced or disclosed to anyone without direct written permission from All Star Bleachers

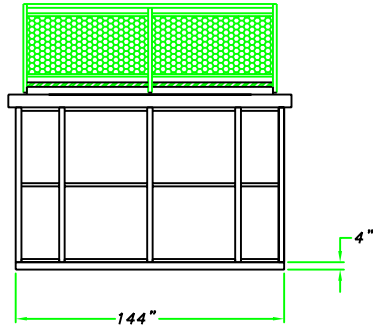
ELEVATION A



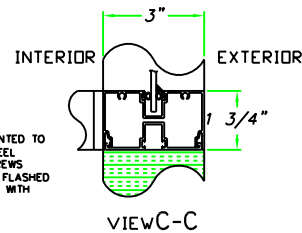
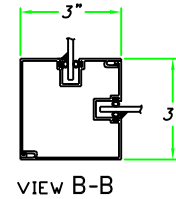
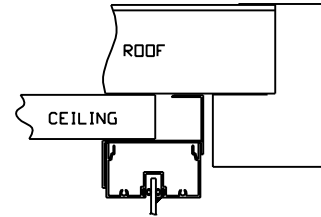
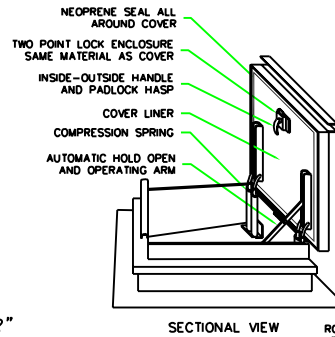
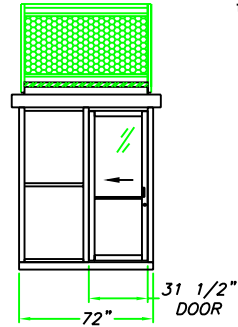
ELEVATION B



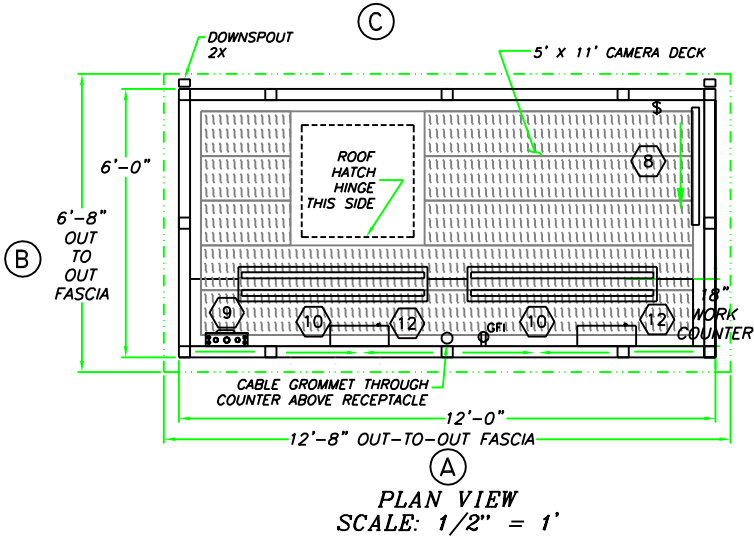
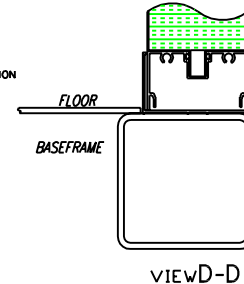
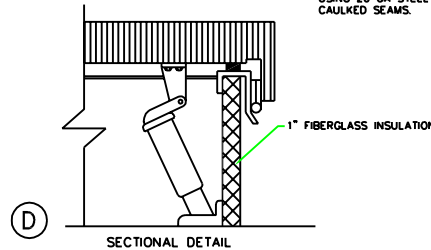
ELEVATION C



ELEVATION D



ROOF HATCH TO BE MOUNTED TO 3" x 3" x 1/8" TUBE STEEL H-FRAME USING TEK SCREWS EVERY 24" OC. HATCH FLASHED USING 20 GA STEEL TRIM WITH CAULKED SEAMS.



CUSTOMER NAME

CUSTOMER ADDRESS

CITY, STATE ZIP



AUSTIN MOHAWK & CO., INC.

2175 BEECHGROVE PLACE
UTICA, NY 13501
PHONE: 315.793.3000
TOLL FREE: 1.800.765.3110
FAX: 315.793.9370

WEBSITE: www.austinmohawk.com
E-mail: info@austinmohawk.com

TITLE: 6'-0" X 12'-0"
VARSITY PRESSBOX - WITH CD

JOB NO:

LOCATION:

MOD NO: VPB612-CD

COLOR:

DATE:

DRAWN BY:

APPROVED BY:

SCALE: 1/4" = 1'

SHEET: 2 of 2

CERTIFICATION