

Notice - All Star Bleachers claims proprietary rights in the information disclosed on this drawing. It is issued in confidence for engineering information only and may not be used, in whole or in part, to manufacture anything whether or not shown hereon, reproduced or disclosed to anyone without direct written permission from All Star Bleachers

GENERAL BUILDING SPECIFICATIONS:

- A. GENERAL: Pre-assemble building fabricated from low maintenance, lightweight corrosive resistant aluminum (factory fabricated). Building exterior shall have no exposed fasteners.
- 1 DIMENSIONS: 7'-9" wide x 24'-0" long and 107" nominal outside height not including camera deck. Interior dimension from floor to ceiling shall be 90" (2286.0 mm).
- 2 FRAME CONSTRUCTION: Provide structural framing of 6063-T6 aluminum alloy extrusions. Members shall have a CLEAR ANODIZED finish. Connections shall be fastened internally to framing system using mechanical fasteners or MIG welded where necessary.
- 3 BASE / FLOOR: Building to typically be constructed on a mechanical tube frame. Floor assembly to be comprised of 3/16" aluminum tread plate finished floor. Floor to be insulated to R-18.5 with foam insulation board.
- 4 LOWER WALL PANEL: Exterior shall be .032 CLEAR ANODIZED aluminum, 7/16" OSB, 2 3/8" EPS insulation (R-12.1) and .032 interior CLEAR ANODIZED aluminum. Overall thickness of panel shall be 3" (76.2 mm).
- 5 CEILING: Interior ceiling shall be foam core panel system providing smooth flat interior, constructed from 24 ga, prefinished white steel with batten fiber glass insulation (R-15).
- 6 ROOF: Constructed using galvanized 20 ga, G-60 interlocking pan sections. Sections are 3" (76.2 mm) high varying widths able to support minimum of 50 psf (2394 Pa) live load. Roof shall have a 12" perimeter overhang, and drains into full perimeter gutter system.
- 7 WINDOWS: Fixed windows and Sliding windows (Qty 4) shall have CLEAR ANODIZED aluminum frame and 3/4" (19.05 mm) SOLAR CONTROL LOW-E with ARGON GAS insulated tempered safety glass and locking device. Glass shall be framed to building using aluminum framing system with no exterior exposed fasteners.
- 8 DOOR: Sliding door shall be extruded aluminum frame, top hung style using an overhead track and heavy duty ball bearing nylon tires with steel hub. Door shall be supplied with mortise hook bolt lockset with removable cylinder. Door color to be CLEAR ANODIZED.
- 9 ELECTRICAL: Electrical shall be wired according to N.E.C. Standards. Load center shall be a 125 amp, 120/240 volt unit with 8/16 open circuits. Wiring shall be within surface mounted EMT conduit, and included shall be (Qty 2) GFI duplex receptacles with tester and (Qty 4) standard duplex receptacles.
- 10 LIGHTING: (Qty 4) Lighting shall be dual bulb fluorescent lights.
- 11 HEAT: (Qty 2) Heating shall be wall mounted electric with fan forced operation, 3000/4000w, 10000 BTU and thermostat in an enamel coated 20 ga steel cabinet.
- 12 SCORER'S TABLE: Full length, 24" deep, 3/4" white "melamine" countertop with drop wire grommets at receptacle locations.
- 13 CAMERA DECK: 6'-0" x 20'-0" camera deck, roof top access by hatch and internal ladder. Perimeter fence (verticals, horizontals and chain link) by others in field.

CUSTOMER NAME

CUSTOMER ADDRESS

CITY, STATE ZIP



**AUSTIN MOHAWK & CO.,
INC.**

2175 BEECHGROVE PLACE
UTICA, NY 13501
PHONE: 315.793.3000
TOLL FREE: 1.800.765.3110
FAX: 315.793.9370

WEBSITE: www.austinmohawk.com
E-mail: info@austinmohawk.com

TITLE: 7'-9" X 24'-0"
DIVISION 1 PRESSBOX -WITH CD

JOB NO:

LOCATION:

MOD NO: DIPB824-CD

COLOR:

DATE:

DRAWN BY:

APPROVED BY:

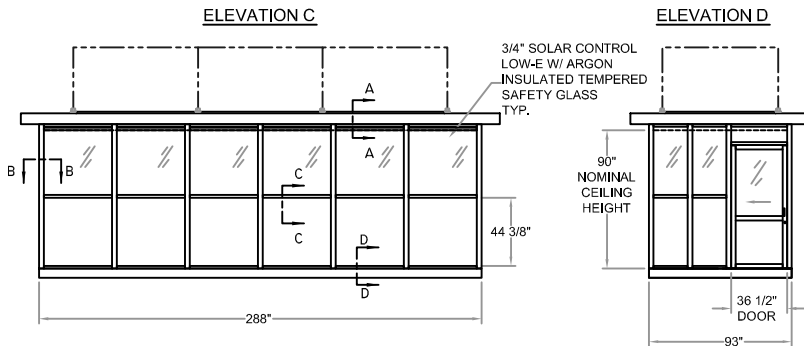
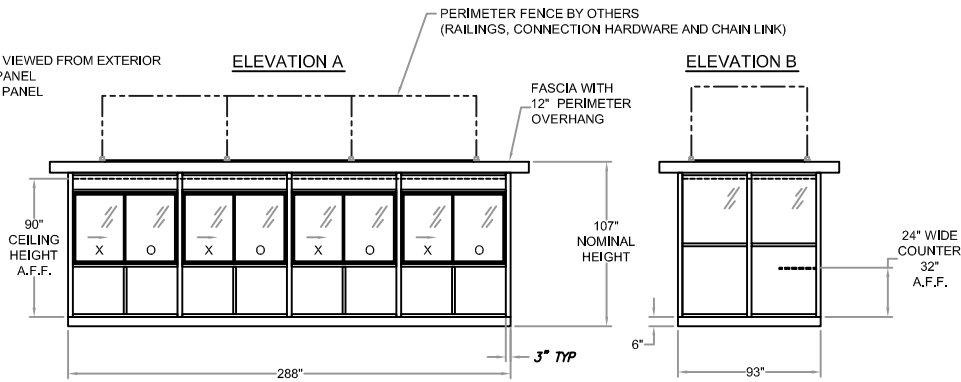
SCALE: 1/4" = 1'

SHEET: 1 of 2

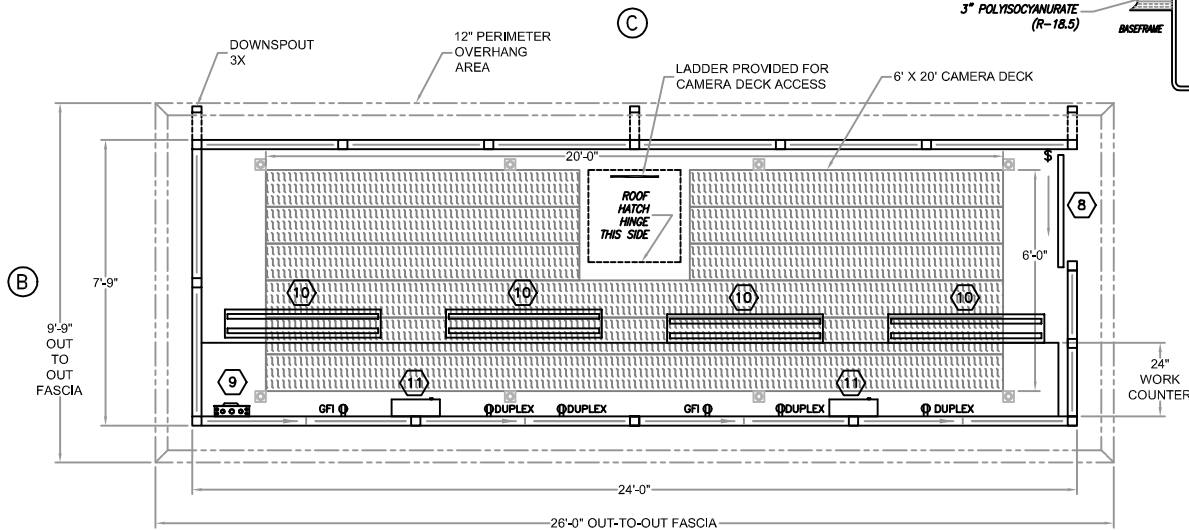
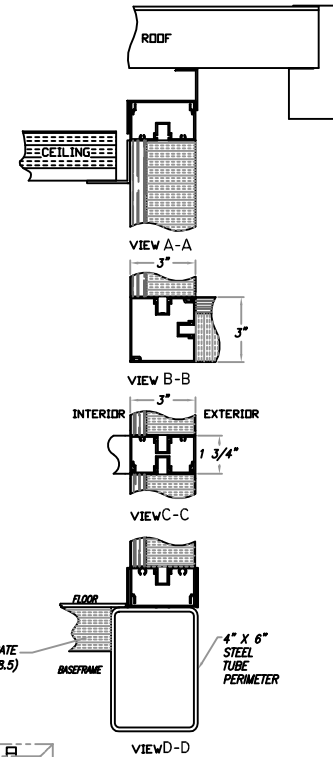
REVISION STATUS OF SHEETS		
-	-	REV
2	1	SH

CERTIFICATION

NOTE:
 SLIDE WINDOWS VIEWED FROM EXTERIOR
 X = OPERATING PANEL
 O = STATIONARY PANEL



Notice - All Star Bleachers claims proprietary rights in the information disclosed on this drawing. It is issued in confidence for engineering information only and may not be used, in whole or in part, to manufacture anything whether or not shown hereon, reproduced or disclosed to anyone without direct written permission from All Star Bleachers



PLAN VIEW
 SCALE: 1/2" = 1'

CUSTOMER NAME

CUSTOMER ADDRESS

CITY, STATE ZIP



AUSTIN MOHAWK & CO., INC.

2175 BEECHGROVE PLACE
 UTICA, NY 13501
 PHONE: 315.793.3000
 TOLL FREE: 1.800.765.3110
 FAX: 315.793.9370

WEBSITE: www.austinmohawk.com
 E-mail: info@austinmohawk.com

TITLE: 7'-9" X 24'-0"
 DIVISION 1 PRESSBOX - WITH CD

JOB NO:

LOCATION:

MOD NO: DIPB824-CD

COLOR:

DATE:

DRAWN BY:

APPROVED BY:

SCALE: 1/4" = 1'

SHEET: 2 of 2

CERTIFICATION