

GENERAL BUILDING SPECIFICATIONS:

Notice - All Star Bleachers claims proprietary rights in the information disclosed on this drawing. It is issued in confidence for engineering information only and may not be used, in whole or in part, to manufacture anything whether or not shown hereon, reproduced or disclosed to anyone without direct written permission from All Star Bleachers

- A. GENERAL: Pre-assemble building fabricated from low maintenance, lightweight corrosive resistant aluminum (factory fabricated).
- ① DIMENSIONS: 7' wide x 16' long and 138 1/2" (3517.9 mm) outside height. Interior dimension from floor to ceiling shall be 83" (2108.2 mm).
- ② FRAME CONSTRUCTION: Provide structural framing of 6063-T6 aluminum alloy extrusions. Members shall have a color to be determined painted finish. Connections shall be fastened internally to framing systems using mechanical fasteners or MIG welded where necessary.
- ③ BASE / FLOOR: Base structure shall be layered assembly, 2" (50.8 mm) thick, consisting of a .032 mill finish aluminum underside, plywood and a finished floor of nonskid aluminum diamond tread plate. Base is mounted to steel base frame (where necessary).
- ④ LOWER WALL PANEL: Exterior shall be .032 painted aluminum (color to be determined) , 3" (76.2 mm) insulation and .032 interior aluminum. Overall thickness of panel shall be 3" (76.2 mm).
- ⑤ CEILING: Interior ceiling shall be foam core panel system providing smooth flat interior, constructed from 24 ga prefinished white steel with expanded polystyrene core.
- ⑥ ROOF: Construct using steel 20 ga, G-90 interlocking pan sections. Sections shall be 3" (76.2 mm) high with varying widths able to support minimum of 50 psf live load. Provide roof drains into full-perimeter gutter system.
- ⑦ WINDOWS: No fixed windows. Sliding windows shall have aluminum frame and 1/8" (3.18 mm) insulated glass and locks. Glass shall be glazed within wall system extrusions and not fastened to exterior wall.
- ⑧ DOORS: Sliding doors shall be extruded aluminum frame, top hung type using heavy duty ball bearing nylon tire with steel hub. A solid brass cylinder lock provided.
- ⑨ ELECTRICAL: Electrical shall be wired according to N.E.C. Standards. Load center shall be a General Electric 125 Amp 120/240 volt unit with 8 or 16 open circuits. Wiring shall be #12 within surface mounted EMT conduit lines, and included shall be a GFCI duplex receptacle with tester.
- ⑩ LIGHTING: Lighting shall be twin fluorescent lights with tube covers.
- ⑪ HEAT: Heating shall be heavy duty wall mounted electric with fan forced operation, 3000w/10,000 BTU and thermostat in an enamel coated 20 ga steel cabinet.
- ⑫ HVAC: Thru-wall A/C with heat. 11,600/11,400 Btuh (cooling), 11,600/9,500 Btuh (electric heat) @ 230/208 Volts.
- ⑬ CAMERA DECK: 7' x 9' camera deck, roof top access by hatch and internal ladder. Perimeter fence (verticals, horizontals and chain link) shall be supplied.

CUSTOMER NAME

CUSTOMER ADDRESS

CITY, STATE ZIP

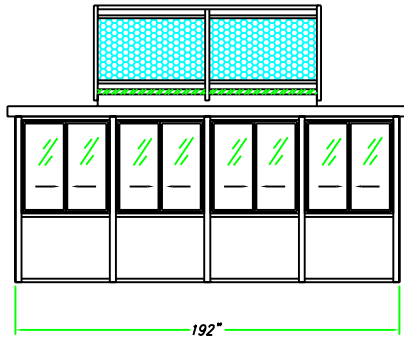


**AUSTIN MOHAWK & CO.,
INC.**
2175 BEECHGROVE PLACE
UTICA, NY 13501
PHONE: 315.793.3000
TOLL FREE: 1.800.765.3110
FAX: 315.793.9370
WEBSITE: www.austinmohawk.com
E-mail: info@austinmohawk.com

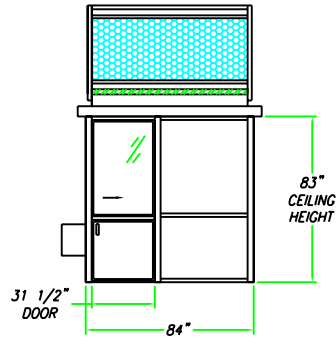
TITLE:	7'-0" X 16'-0" VARSITY PRESSBOX - WITH CD
JOB NO:	
LOCATION:	
MOD NO:	VPB716-CD
COLOR:	
DATE:	
DRAWN BY:	
APPROVED BY:	
SCALE:	1/4" = 1'
SHEET:	1 of 2

REVISION STATUS OF SHEETS		
-	-	REV
2	1	SH
CERTIFICATION		

ELEVATION A

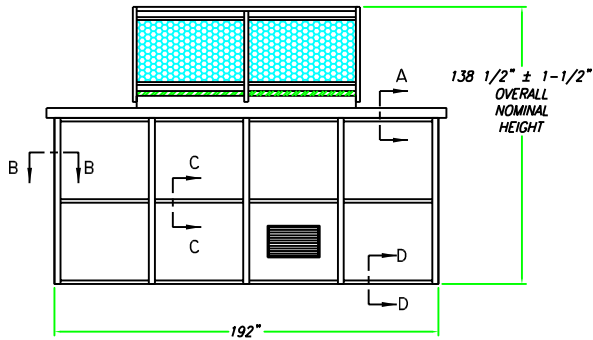


ELEVATION B

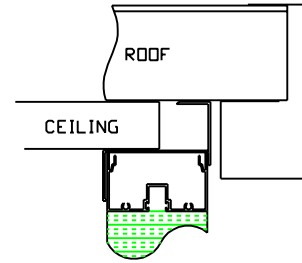
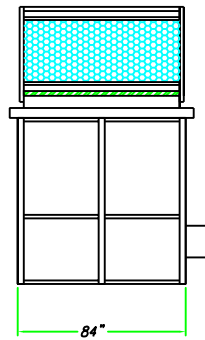


Notice - All Star Bleachers claims proprietary rights in the information disclosed on this drawing. It is issued in confidence for engineering information only and may not be used, in whole or in part, to manufacture anything whether or not shown hereon, reproduced or disclosed to anyone without direct written permission from All Star Bleachers

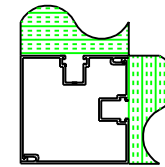
ELEVATION C



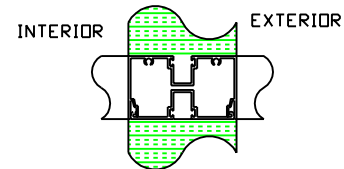
ELEVATION D



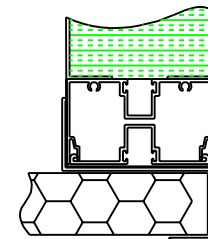
VIEW A-A



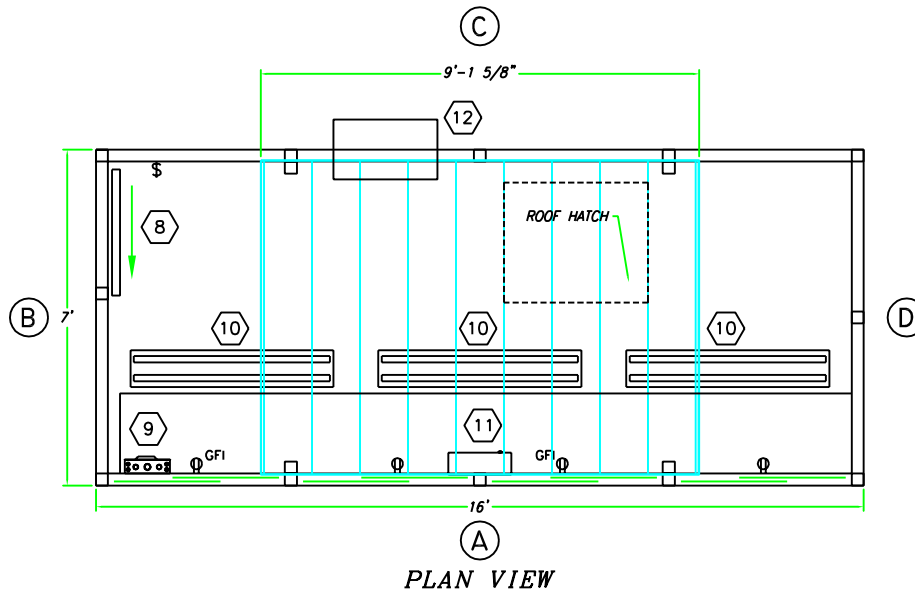
VIEW B-B



VIEW C-C



VIEW D-D



PLAN VIEW

CUSTOMER NAME

CUSTOMER ADDRESS

CITY, STATE ZIP



AUSTIN MOHAWK & CO., INC.

2175 BEECHGROVE PLACE
 UTICA, NY 13501
 PHONE: 315.793.3000
 TOLL FREE: 1.800.765.3110
 FAX: 315.793.9370

WEBSITE: www.austinmohawk.com
 E-mail: info@austinmohawk.com

TITLE: 7'-0" X 16'-0"
 VARSITY PRESSBOX - WITH CD

JOB NO:

LOCATION:

MOD NO: VPB716-CD

COLOR:

DATE:

DRAWN BY:

APPROVED BY:

SCALE: 1/4" = 1'

SHEET: 2 of 2

CERTIFICATION