

Notice - All Star Bleachers claims proprietary rights in the information disclosed on this drawing. It is Issued in confidence for engineering information only and may not be used, in whole or in part, to manufacture anything whether or not shown hereon, reproduced or disclosed to anyone without direct written permission from All Star Bleachers

TYPICAL SEATING SOLUTIONS STEEL BUILDING SPECIFICATIONS

- A. GENERAL: Pre-assemble building of steel construction.
- ① DIMENSIONS: 6' 0" (1828.8 mm) wide x 6' 0" (1828.8 mm) long and 119" (3022.6 mm) nominal outside height.
- ② FRAME CONSTRUCTION: Framing shall be 14 ga (1.78 mm) or heavier mechanical tube. All joints shall be MIG welded.
- ③ BASE/FLOOR: Building to typically be constructed on a 4" galvanized mechanical tube frame (when required). Floor assembly to be comprised of 3/16" aluminum tread plate finished floor.
- ④ WALL PANELS: Wall panels shall be 16 ga exterior, 2" (50.8 mm) , E.P.S. insulation (2"- R-10), and a 16 ga inside face. Panels shall be galvanized and shall be MIG welded into place.
- ⑤ CEILING: Interior ceiling shall be foam core panel system providing smooth flat interior, constructed from 24 ga prefinished white steel with expanded polystyrene core.
- ⑥ BARREL ROOF: Constructed using 14 ga (1.78 mm) or heavier galvanized steel angle. All joints shall be MIG welded. Decking shall be 12" wide x 2 1/2" tall interlocking deckpan constructed of minimum of .040 aluminum able to support minimum of 40 psf (1915 Pa) live load. Roof color to be SW#4003 (PALLET TAN) and soffit color to be SW#4005 (CYLINDER CREAM). Roof to be provided with a 12" perimeter overhang.
- ⑦ FINISH: Surfaces shall be painted using an epoxy/urethane prime to paint system designed to withstand salt spray and freeze thaw testing.
- ⑧ WINDOWS: Fixed windows shall be 3/8" (9.525 mm) CLEAR tempered safety glass with speak thru intercom w/ std 18" gooseneck microphone (Norcon TTU/AB). Glass shall be framed to building using steel/aluminum framing system with no exposed fasteners.
- ⑨ DOOR: Swing door shall be a steel commercial grade with 3 hinges and closure arm. Swing door shall have a single bore "161" prep. supplied with a keyed lever lockset. Door color to be SW#4004 (TANNERY)
- ⑩ ELECTRICAL: Electrical shall be wired according to N.E.C. Standards. Load center shall be a 125 amp. 120/240 volt unit with 8/16 open circuits. Wiring shall be within surface mounted EMT conduit, and included shall be (1) GFI duplex receptacle with tester.
- ⑪ LIGHTING: Interior lighting shall be a dual bulb fluorescent light. Exterior lighting shall be a 4' dual bulb exterior fluorescent light, mounted to soffit.
- ⑫ HVAC: A/C unit to be thru-wall with heat, 11,600/11,400 BTUH (cooling), 11,600/9,500 BTUH (electric heat). 9.0/9.0 E.E.R. 230/208 volts.
- ⑬ COUNTER: Full width x 24" deep stainless steel work counter with (1) cable grommets.
- ⑭ TRANSACTION DRAWER: Stainless steel transaction drawer with counter top opening size: width - 14 1/2", depth - 17 1/8", height - 5 3/4".
- ⑮ CASH DRAWER: (Qty-1) Locking cash drawer box, height - 3.54", width - 13", depth - 16.3", color black, construction steel, includes four coin/four bill removable money tray. Drawer shall be installed under counter.

EXCLUSIONS:
- BRICK BY OTHERS

REVISION STATUS OF SHEETS		
-	-	REV
2	1	SH
CERTIFICATION		

CUSTOMER NAME

ADDRESS
CITY, STATE ZIP



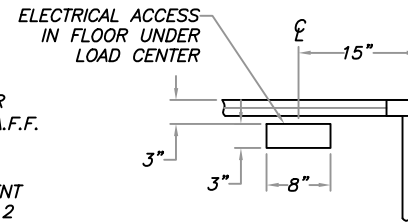
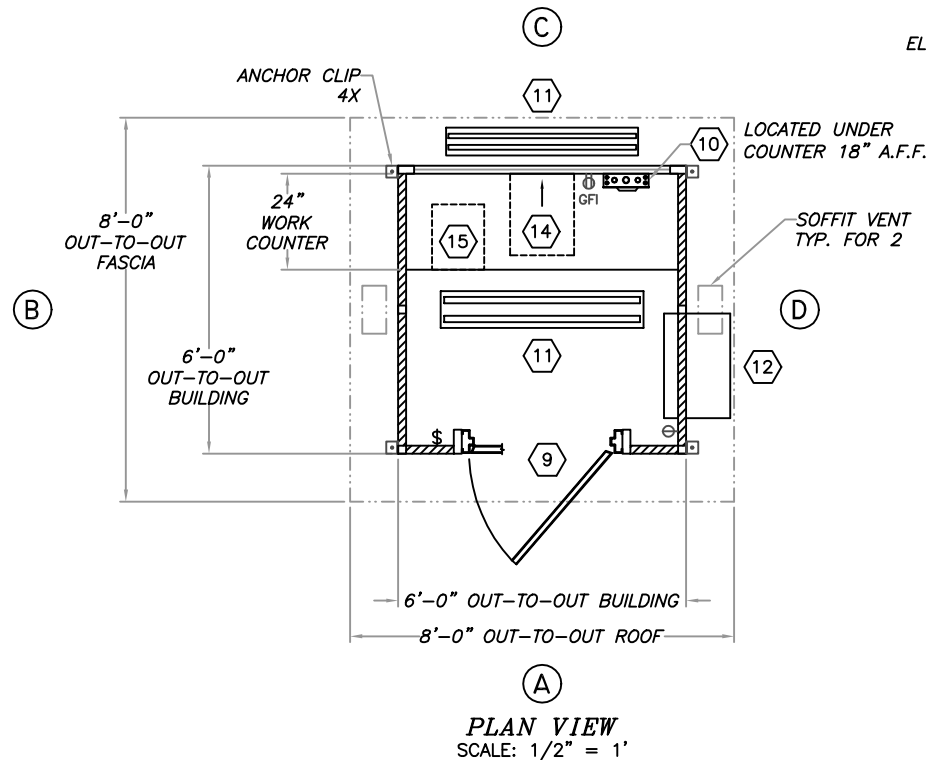
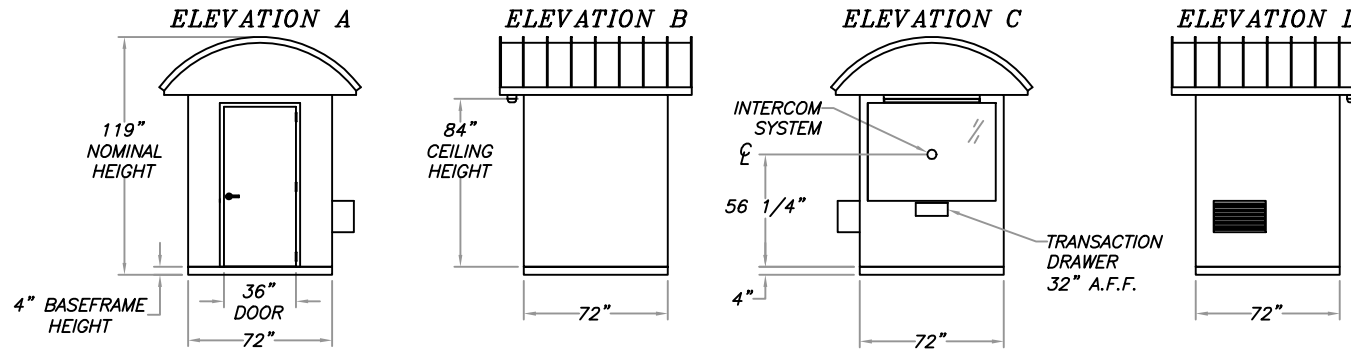
AUSTIN MOHAWK & CO.,
INC.

2175 BEECHGROVE PLACE
UTICA, NY 13501
PHONE: 315.793.3000
TOLL FREE: 1.800.765.3110
FAX: 315.793.9370

WEBSITE: www.austinmohawk.com
E-mail: info@austinmohawk.com

TITLE:	6'-0" X 6'-0" Ticket Booth
JOB NO:	
LOCATION:	
MOD NO:	TB66
COLOR:	
DATE:	
DRAWN BY:	
APPROVED BY:	
SCALE:	1/4" = 1'
SHEET:	1 of 2

Notice - All Star Bleachers claims proprietary rights in the information disclosed on this drawing. It is Issued In confidence for engineering information only and may not be used, in whole or in part, to manufacture anything whether or not shown hereon, reproduced or disclosed to anyone without direct written permission from All Star Bleachers



ELECTRICAL ACCESS DETAIL
NOT TO SCALE

PLAN VIEW
SCALE: 1/2" = 1'

CERTIFICATION

CUSTOMER NAME

CUSTOMER ADDRESS

CITY, STATE ZIP



AUSTIN MOHAWK & CO.,
INC.

2175 BEECHGROVE PLACE
UTICA, NY 13501
PHONE: 315.793.3000
TOLL FREE: 1.800.765.3110
FAX: 315.793.9370

WEBSITE: www.austinhawk.com
E-mail: info@austinhawk.com

TITLE: 6'-0" X 6'-0"
Ticket Booth

JOB NO:

LOCATION:

MOD NO: TB66

COLOR:

DATE:

DRAWN BY:

APPROVED BY:

SCALE: 1/4" = 1'

SHEET: 2 of 2